

 **BOEING**  
COMPONENT  
MAINTENANCE MANUAL

TO: ALL HOLDERS OF OVERWING ESCAPE HATCH ASSEMBLY COMPONENT MAINTENANCE MANUAL  
52-21-11

REVISION NO. 7 DATED JUL 01/90

HIGHLIGHTS

Pages which have been added or revised are outlined below together with the highlights of the revision. Remove and insert the affected pages as listed and enter Revision No. and date to the Record of Revision Sheet.

CHAPTER/SECTION

AND PAGE NO.

1034,1051-1052

DESCRIPTION OF CHANGE

Added 145T6092-4 Bellcrank assembly.

**52-21-11**

HIGHLIGHTS

01.101

Page 1

Oct 01/90

## OVERWING ESCAPE HATCH ASSEMBLY

PART NUMBER 145T6016-1,-2,-41 THRU -44,  
-101,-102,-105,-106,  
-113,-114,-117,-118

COMPONENT MAINTENANCE MANUAL  
WITH  
ILLUSTRATED PARTS LIST

**52-21-11**

TITLE PAGE

Page 1

Oct 10/86

01.1



REVISION RECORD

- Retain this record in front of manual. On receipt of revision, insert revised pages in the manual, and enter revision number, date inserted and initial.

REVISION NUMBER	REVISION DATE	DATE FILED	BY	REVISION NUMBER	REVISION DATE	DATE FILED	BY



TEMPORARY REVISION AND SERVICE BULLETIN RECORD

BOEING SERVICE BULLETIN	BOEING TEMPORARY REVISION	OTHER DIRECTIVE	DATE OF INCORPORATION INTO MANUAL
SB 52-20		PRR B10307 PRR B10947 PRR B11044 PRR C12205 PRR B10611	JAN 10/82 JUL 10/84 JUL 10/84 JUL 10/84 OCT 10/84 OCT 10/84

52-21-11

TR & SB RECORD

01.1

Page 1

Oct 10/84


**BOEING**  
 COMPONENT  
 MAINTENANCE MANUAL

PAGE	DATE	CODE	PAGE	DATE	CODE
52-21-11			REPAIR-GENERAL		
			601	OCT 10/86	01.1
			602	JUL 10/83	01
TITLE PAGE			603	JUL 10/83	01
1	OCT 10/86	01.1	604	BLANK	
2	BLANK				
			REPAIR 1-1		
REVISION RECORD			601	OCT 10/86	01.1
1	JUL 10/83	01	602	BLANK	
2	BLANK				
			REPAIR 2-1		
TR & SB RECORD			601	OCT 10/86	01.1
1	OCT 10/84	01.1	602	BLANK	
2	BLANK				
			REPAIR 3-1		
LIST OF EFFECTIVE PAGES			601	OCT 10/86	01.1
*1	JUL 01/90	01	602	BLANK	
THRU LAST PAGE					
			REPAIR 4-1		
CONTENTS			601	OCT 10/86	01.1
1	JUL 10/84	01.1	602	BLANK	
2	BLANK				
			REPAIR 5-1		
INTRODUCTION			601	JUL 10/84	01.1
1	JUL 10/83	01	602	BLANK	
2	BLANK				
			REPAIR 6-1		
DESCRIPTION & OPERATION			601	JUL 10/84	01.1
1	JUL 10/83	01	602	BLANK	
2	BLANK				
			REPAIR 7-1		
DISASSEMBLY			601	OCT 10/86	01.1
301	OCT 10/86	01.1	602	OCT 10/86	01.1
302	BLANK		603	JUL 10/84	01.1
			604	OCT 10/86	01.1
CLEANING			605	OCT 10/86	01.1
401	JUL 10/83	01	606	BLANK	
402	BLANK				
			ASSEMBLY		
CHECK			701	OCT 10/86	01.1
501	OCT 10/86	01.1	702	BLANK	
502	BLANK				

\* = REVISED, ADDED OR DELETED

52-21-11

 EFFECTIVE PAGES  
 CONTINUED Page 1  
 01 Jul 01/90

PAGE	DATE	CODE	PAGE	DATE	CODE
FITS AND CLEARANCES			ILLUSTRATED PARTS LIST		
801	OCT 10/86	01.1	1039	OCT 10/86	01.1
802	BLANK		1040	OCT 10/86	01.1
ILLUSTRATED PARTS LIST			1041	OCT 10/86	01.1
1001	JUL 10/83	01	1042	OCT 10/86	01.1
1002	OCT 10/86	01.1	1043	OCT 10/86	01.1
1003	OCT 10/86	01.1	1044	OCT 10/86	01.1
1004	OCT 10/86	01.1	1045	OCT 10/86	01.1
1005	OCT 10/86	01.1	1046	OCT 10/86	01.1
1006	OCT 10/86	01.1	1047	OCT 10/86	01.1
1007	OCT 10/86	01.1	1048	OCT 10/86	01.1
1008	OCT 10/86	01.1	1049	OCT 10/86	01.1
1009	OCT 10/86	01.1	1050	OCT 10/86	01.1
1010	OCT 10/86	01.1	*1051	JUL 01/90	01.1
1011	OCT 10/86	01.1	*1052	JUL 01/90	01.1
1012	OCT 10/86	01.1	1053	OCT 10/86	01.1
1013	OCT 10/86	01.1	1054	BLANK	
1014	OCT 10/86	01.1	1055	JUL 10/84	01.1
1015	OCT 10/86	01.1	1056	OCT 10/84	01.1
1016	OCT 10/86	01.1	1057	OCT 10/86	01.1
1017	OCT 10/86	01.1	1058	OCT 10/86	01.1
1018	OCT 10/86	01.1	1059	JUL 10/84	01.1
1019	BLANK		1060	OCT 10/84	01.101
1020	OCT 10/86	01.1	1061	OCT 10/86	01.1
1021	OCT 10/86	01.1	1062	OCT 10/86	01.1
1022	OCT 10/86	01.1	1063	OCT 10/86	01.1
1023	OCT 10/86	01.1	1064	OCT 10/86	01.1
1024	OCT 10/86	01.1	1065	OCT 10/86	01.1
1025	OCT 10/86	01.1	1066	OCT 10/86	01.1
1026	OCT 10/86	01.1	1067	OCT 10/86	01.1
1027	OCT 10/86	01.1	1068	OCT 10/86	01.1
1028	OCT 10/86	01.1	1069	OCT 10/86	01.1
1029	OCT 10/86	01.1	1070	OCT 10/86	01.1
1030	OCT 10/86	01.1	1071	OCT 10/86	01.1
1031	BLANK		1072	OCT 10/86	01.1
1032	OCT 10/84	01.1	1073	OCT 10/86	01.1
1033	OCT 10/86	01.1	1074	OCT 10/86	01.1
*1034	JUL 01/90	01.1	1075	OCT 10/86	01.1
1035	OCT 10/86	01.1	1076	OCT 10/86	01.1
1036	OCT 10/86	01.1	1077	OCT 10/86	01.1
1037	OCT 10/86	01.1	1078	OCT 10/86	01.1
1038	OCT 10/86	01.1	1079	OCT 10/86	01.1
			1080	OCT 10/86	01.1

\* = REVISED, ADDED OR DELETED

**52-21-11**

 EFFECTIVE PAGES  
 LAST PAGE Page 2  
 01 Jul 01/90

TABLE OF CONTENTS

<u>Paragraph Title</u>	<u>Page</u>
Description and Operation. . . . .	1
Testing and Trouble Shooting (not applicable)	
Disassembly. . . . .	301
Cleaning . . . . .	401
Check. . . . .	501
Repair . . . . .	601
Assembly . . . . .	701
Fits and Clearances. . . . .	801
Special Tools (not applicable)	
Illustrated Parts List . . . . .	1001

52-21-11

CONTENTS

Page 1

Jul 10/84

01.1



## INTRODUCTION

The instructions in this manual provide the information necessary to perform maintenance functions ranging from simple checks and replacement to complete shop-type repair.

This manual is divided into separate sections:

- |  |                              |
|--|------------------------------|
| 1. Title Page                                      | 4. List of Effective Pages   |
| 2. Record of Revisions                             | 5. Table of Contents         |
| 3. Temporary Revision &<br>Service Bulletin Record | 6. Introduction              |
|  | 7. Procedures & IPL Sections |

Refer to the Table of Contents for the page location of applicable sections. An asterisked flagnote \*[ ] in place of the page number indicates that no special instructions are provided since the function can be performed using standard industry practices.

The beginning of the REPAIR section includes a list of the separate repairs, a list of applicable standard Boeing practices, and an explanation of the True Position Dimensioning symbols used.

An explanation of the use of the Illustrated Parts List is provided in the Introduction to that section.

All weights and measurements used in the manual are in English units, unless otherwise stated. When metric equivalents are given they will be in parentheses following the English units.

Design changes, optional parts, configuration differences and Service Bulletin modifications create alternate part numbers. These are identified in the Illustrated Parts List (IPL) by adding an alphabetical character to the basic item number. The resulting item number is called an alpha-variant. Throughout the manual, IPL basic item number references also apply to alpha-variants unless otherwise indicated.

Verification:

Assembly  
May 5, 1982

**52-21-11**

INTRODUCTION

01

Page 1

Jul 10/83





OVERWING ESCAPE HATCH ASSEMBLY

DESCRIPTION AND OPERATION

1. Description

A. The overwing escape hatch is a plug, full-cut door opened from the inside or outside by a manually operated handle pinned to a torque tube. Bellcranks on each end of the torque tube have rollers which engage with fittings on the door frame and are held in position by two springs. Six stops on the side of the door transmit cabin pressure loads to the fuselage.

2. Operation

A. Pulling the handle on the inside of the airplane rotates the torque tube and releases the bellcrank rollers from the hatch fittings on the airplane fuselage. The hatch moves inward and lifts clear of the pivot fitting on the door sill.

3. Leading Particulars (Approximates)

Length - 37 inches  
Width - 19 inches  
Thickness - 4 inches  
Weight - 52 pounds

52-21-11

DESCRIPTION & OPERATION

01

Page 1

Jul 10/83



DISASSEMBLY

1. Use standard industry practices for disassembly of this component.

NOTE: Disassemble this component only as necessary to complete fault isolation determine the serviceability of parts, perform required repairs, and restore the unit to serviceable condition.

52-21-11

DISASSEMBLY

01.1

Page 301

Oct 10/86



CLEANING

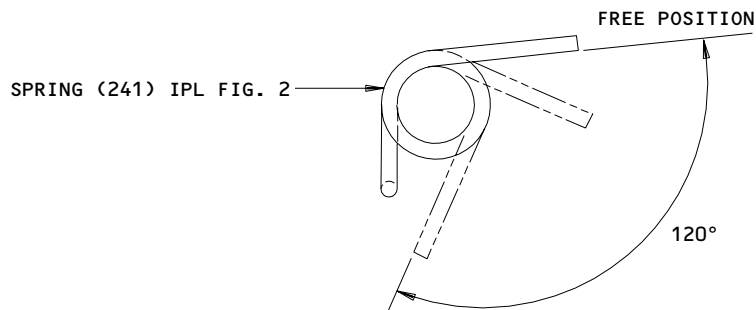
1. Clean all parts in accordance with standard industry practices except the following.
2. Clean all rubber seals with a solution of mild soap and water.

52-21-11

01  
CLEANING  
Page 401  
Jul 10/83

CHECK

1. Check all parts for obvious defects in accordance with standard industry practices.
2. Penetrant examine per 20-20-02 - fitting (27, 296, IPL Fig. 2), fitting (505, 510, 540, 545, 550, 551, IPL Fig. 3), plate (315, IPL Fig. 3), housing (75, 80, IPL Fig. 3), door (261, IPL Fig. 2), support (66, 66A, 186, 186A, IPL Fig. 2), arm (351, 351A, 386, 386A, IPL Fig. 2), and handle (246, IPL Fig. 2).
3. Magnetic particle examine per 20-20-01 - pin (83, IPL Fig. 3), arm (161, IPL Fig. 2), bellcrank (116, 123, 181, 181A, IPL Fig. 2), sleeve (128, 286, 291, IPL Fig. 2), tube (165, IPL Fig. 2), and spring (241, 281, IPL Fig. 2).
4. Check spring (241, IPL Fig. 2) per Fig. 501.
  - A. Deflect spring 28-30 degrees and check that load is 0.50-0.66 pound-inches.
  - B. Deflect spring 118-122 degrees and check that load is 2.08-2.58 pound-inches.
5. Check spring (281, IPL Fig. 2)
  - A. Compress spring 3.34-3.44 inches and check that load is 186-228 pounds.
  - B. Compress spring 3.64-3.74 inches and check that load is 139-157 pounds.



Spring Check  
 Figure 501

REPAIR – GENERAL1. Contents

- A. Repair, refinish, and replacement procedures as applicable, are included in separate repair sections as follows:

<u>P/N</u>	<u>NAME</u>	<u>REPAIR</u>
145T6003	FITTING ASSEMBLY	1-1
145T6004	FITTING ASSEMBLY	2-1
145T6011	HOUSING ASSEMBLY	3-1
145T6036	ARM ASSEMBLY	4-1
145T6093		
145T6040	FITTING ASSEMBLY	5-1
145T6014	SUPPORT ASSEMBLY	6-1
- - -	MISCELLANEOUS PARTS	7-1

2. Standard Practices

- A. Refer to the following standard practices as applicable, for details of procedures in the individual repairs.

20-30-02	Stripping of Protective Finishes
20-30-03	General Cleaning Procedures
20-41-01	Decoding Table For Boeing Finish Codes
20-41-02	Application of Chemical and Solvent Resistant Finishes
20-42-03	Hard Chrome Plating
20-42-05	Bright Cadmium Plating
20-43-01	Chromic Acid Anodizing
20-43-03	Alodizing
20-50-03	Bearing Installation and Retention
20-50-08	Application of Dry Lubricant

3. Materials

NOTE: Equivalent substitutes may be used.

- A. Coating - Alodine 1200 (Ref 20-60-02)
- B. Enamel - BMS 10-11, Type 2 white gloss (Ref 20-60-02)  
 - BMS 10-79, Type 2 gloss (Ref 20-60-02)  
 - BMS 10-60, Type 2 gloss (Ref 20-60-02)

52-21-11

REPAIR-GENERAL

01.1

Page 601

Oct 10/86

- C. Lubricant - MIL-L-8937 (Ref 20-60-03)
- D. Primer - BMS 10-11, Type 1 (Ref 20-60-02)
  - BMS 10-11, Type 1 yellow (Ref 20-60-02)
  - BMS 10-79, Type 2 (Ref 20-60-02)
- E. Sealant - BMS 5-95 (Ref 20-60-04).

**52-21-11**

REPAIR-GENERAL

01 Page 602

Jul 10/83

**4. Dimensioning Symbols**

A. Standard True Position Dimensioning Symbols used in applicable repair procedures are shown in Fig. 601.

—	STRAIGHTNESS	$\oplus$	THEORETICAL EXACT POSITION OF A FEATURE (TRUE POSITION)
$\square$	FLATNESS	$\varnothing$	DIAMETER
$\perp$	PERPENDICULARITY (OR SQUARENESS)	BASIC (BSC) OR	A THEORETICALLY EXACT DIMENSION USED TO DESCRIBE SIZE, SHAPE OR LOCATION OF A FEATURE FROM WHICH PERMISSIBLE VARIATIONS ARE ESTABLISHED BY TOLERANCES ON OTHER DIMENSIONS OR NOTES.
//	PARALLELISM	<b>DIM</b>	
$\bigcirc$	ROUNDNESS	<b>-A-</b>	DATUM
$\bigcirc$	CYLINDRICITY	$\textcircled{M}$	MAXIMUM MATERIAL CONDITION (MMC)
$\frown$	PROFILE OF A LINE	$\textcircled{S}$	REGARDLESS OF FEATURE SIZE (RFS)
$\triangle$	PROFILE OF A SURFACE	$\textcircled{P}$	PROJECTED TOLERANCE ZONE
$\odot$	CONCENTRICITY		
$\equiv$	SYMMETRY		
$\sphericalangle$	ANGULARITY		
$\nearrow$	RUNOUT		

**EXAMPLES**

$\text{—} \quad 0.002$	STRAIGHT WITHIN 0.002	$\textcircled{\odot} \text{ C } \varnothing \quad 0.0005$	CONCENTRIC TO C WITHIN 0.0005 DIAMETER (FULL INDICATOR MOVEMENT)
$\perp \text{ B } \quad 0.002$	PERPENDICULAR TO B WITHIN 0.002	$\equiv \text{ A } \quad 0.010$	SYMMETRICAL WITH A WITHIN 0.010
// $\text{ A } \quad 0.002$	PARALLEL TO A WITHIN 0.002	$\sphericalangle \text{ A } \quad 0.005$	ANGULAR TOLERANCE 0.005 WITH A
$\bigcirc \quad 0.002$	ROUND WITHIN 0.002	$\oplus \text{ B } \quad 0.002 \quad \textcircled{S}$	LOCATED AT TRUE POSITION WITHIN 0.002 DIA IN RELATION TO DATUM B, REGARDLESS OF FEATURE SIZE
$\bigcirc \quad 0.010$	CYLINDRICAL SURFACE MUST LIE BETWEEN TWO CONCENTRIC CYLINDERS, ONE OF WHICH HAS A RADIUS 0.010 INCH GREATER THAN THE OTHER	$\perp \text{ A } \varnothing \quad 0.010 \quad \textcircled{M}$ $0.510 \quad \textcircled{P}$	AXIS IS TOTALLY WITHIN A CYLINDER OF 0.010-INCH DIAMETER, PERPENDICULAR TO, AND EXTENDING 0.510-INCH ABOVE, DATUM A, MAXIMUM MATERIAL CONDITION
$\frown \text{ A } \quad 0.006$	EACH LINE ELEMENT OF THE SURFACE AT ANY CROSS SECTION MUST LIE BETWEEN TWO PROFILE BOUNDARIES 0.006 INCH APART IN RELATION TO DATUM PLANE A	$2.000$	EXACT DIMENSION IS 2.000
$\triangle \text{ A } \quad 0.020$	SURFACES MUST LIE WITHIN PARALLEL BOUNDARIES 0.02 INCH APART AND EQUALLY DISPOSED ABOUT TRUE PROFILE	OR 2.000 BSC	

True Position Dimensioning Symbols  
Figure 601

**52-21-11**

REPAIR-GENERAL

01 Page 603

Jul 10/83

FITTING ASSEMBLY - REPAIR 1-1

145T6003-1, -4

NOTE: Refer to Repair-Gen for list of applicable standard practices.

1. Bushing Replacement (IPL Fig. 3)

A. Remove bushing (500).

B. Install bushing and swage per 20-50-03.

C. Check to ensure that face of bushing (500) fits snugly against face of fitting (505, 510).

2. Refinish

A. Fitting (505, 510, IPL Fig. 3) - Chromic acid anodize, Type 1 and apply one coat of BMS 10-11, Type 1 primer (F-18.13). Material: Aluminum Alloy.

**52-21-11**

REPAIR 1-1

01.1

Page 601

Oct 10/86



FITTING ASSEMBLY - REPAIR 2-1

145T6004-1, -4, -7, -9

NOTE: Refer to Repair-Gen for list of applicable standard practices.

1. Bushing Replacement (IPL Fig. 3)

- A. Remove bushing (535).
- B. Install bushing and swage per 20-50-03.
- C. Check to ensure that face of bushing (535) fits snugly against face of fitting (540, 545, 550, 551).

2. Refinish

- A. Fittings (540, 545, 550, 551, IPL Fig. 3) - Chromic acid anodize, Type 1 and apply one coat of BMS 10-11, Type 1 primer (F-18.13). Apply one coat of BMS 10-11, Type 2 enamel, color BAC702 white gloss (F-21.03) except omit primer and enamel from 0.500-0.502 inch diameter hole and 30 degree CSK. Material: Aluminum alloy.

**52-21-11**

REPAIR 2-1

01.1

Page 601

Oct 10/86

HOUSING ASSEMBLY - REPAIR 3-1

145T6011-1, -2

NOTE: Refer to Repair-Gen for list of applicable standard practices.

1. Bearing Replacement (IPL Fig. 3)

- | A. Remove bearing (65, 70).
- | B. Press fit bearing (65, 70) in housing (75, 80) per 20-50-03 using wet BMS 5-95 sealant.
- | C. Check to ensure that outer face of bearing (65, 70) is flush with or below face of housing (75, 80).

2. Refinish (IPL Fig. 1)

- A. Housing (75, 80) - Chromic acid anodize, Type 1 and apply one coat of BMS 10-11, Type 1 primer (F-18.13). Material: Aluminum alloy.

**52-21-11**

REPAIR 3-1

01.1

Page 601

Oct 10/86

ARM ASSEMBLY - REPAIR 4-1

145T6036-5

145T6093-1

NOTE: Refer to REPAIR-GEN for list of applicable standard practices.

1. Bushing Replacement (IPL Fig. 2)

- A. Remove bushing (346).
- B. Install bushing with wet BMS 5-95 sealant per 20-50-03.
- C. Fillet seal flanges of bushing with BMS 5-95 sealant.

2. Refinish

- A. Arm (351, 351A) - Chromic acid anodize, Type 1 and apply one coat of BMS 10-11, Type 1 primer (F-18.13). Material: Aluminum alloy.

**52-21-11**

REPAIR 4-1

01.1

Page 601

Oct 10/86

FITTING ASSEMBLY - REPAIR 5-1

145T6040-3

NOTE: Refer to REPAIR-GEN for list of applicable standard practices.

1. Bushing Replacement (IPL Fig. 2)

- | A. Remove bushing (23).
- | B. Install bushing with wet BMS 5-95 sealant per 20-50-03.
- | C. Fillet seal flanges of bushing with BMS 5-95 sealant.

2. Refinish

- | A. Fitting (27, IPL Fig. 2) - Chromic acid anodize, Type 1 and apply one coat of BMS 10-11, Type 1 primer (F-18.13). Material: Aluminum alloy.

**52-21-11**

REPAIR 5-1

01.1

Page 601

Jul 10/84

SUPPORT ASSEMBLY - REPAIR 6-1

145T6014-5

NOTE: Refer to REPAIR-GEN for list of applicable standard practices.

**1. Bushing Replacement** (IPL Fig. 3)

- A. Remove bushing (410).
- B. Install bushing (410) per 20-50-03 using wet BMS 5-95 sealant.
- C. Fillet seal flanges of bushing using BMS 5-95 sealant.

**2. Refinish**

- A. Support (415, IPL Fig. 3) - Chromic acid anodize, Type 1 and apply one coat primer, BMS 10-11, Type 1 (F-18.13). Material: Aluminum alloy.

**52-21-11**

REPAIR 6-1

01.1

Page 601

Jul 10/84


**BOEING**  
 COMPONENT  
 MAINTENANCE MANUAL
MISCELLANEOUS PARTS - REPAIR 7-1

1. Repair of parts listed in Fig. 601 consists of restoration of the original finish.

IPL FIG. & ITEM	MATERIAL	FINISH
<u>Fig. 1</u>  Channel (35)  Bracket (63, 65, 70)  Hatch assembly (80,80A,80B,80C, 80D,80E,81,81A, 81B,81C,81E,81F, 81G,81H)	Al alloy  Al alloy	Chromic acid anodize, Type 1 and apply one coat of BMS 10-11, Type 1 primer (F-18.13).  Chemical treat (colored film) and apply one coat of BMS 10-11, Type 1 primer (F-18.06).  Touch-up unpainted areas as follows (F-21.12): (1) Clean and apply Alodine 1200 to any bare aluminum surfaces. Fastener heads need not be alodined. (2) Reactivate area to be touched up. (3) Touch-up fastener heads, damaged paint, and bared areas with BMS 10-11, Type 1 yellow primer and BMS 10-11, Type 2 enamel color BAC702 white gloss. The following apply to areas previously painted white: Apply one coat of BMS 10-11, Type 2 enamel, color BAC702 white except coating to be 0.0005 to 0.001 inch thick. When painting assemblies, coating thickness requirements only apply to surfaces covered by normal spray techniques (F-21.15).  <u>NOTE:</u> All other areas are not to be painted and must be protected.

Refinish Details  
 Figure 601 (Sheet 1)

**52-21-11**

REPAIR 7-1

01.1

Page 601

Oct 10/86

IPL FIG. & ITEM	MATERIAL	FINISH
<p><u>Fig. 1</u> (Cont)</p> <p>Hatch assembly (1,1A,1B,1C,1D, 1F,1G,5,5A,5B,5C, 5D,5F,5G)</p>		<p>Touch-up unpainted areas (F-21.16) as follows: (1) Clean and apply alodine 1200 to any bare aluminum surfaces. Fastener heads need not be alodined. (2) Reactivate area to be touched up. (3) Touch-up fastener heads, damaged paint and bared areas with BMS 10-11, Type 2 enamel, color BAC702 white gloss.</p>
<p><u>Fig. 2</u></p> <p>Spring (151)</p>	<p>17-7 PH CRES</p>	<p>Apply two coats BMS 10-11, Type 1 primer (F-20.03).</p>
<p>Sleeve (128), Arm (161)</p>	<p>15-5 PH CRES 180-200 ksi</p>	<p>Passivate (F-17.09).</p>
<p>Spacer (391), Bellcrank (116, 123)</p>	<p>17-4 PH CRES 180 ksi min</p>	<p>Passivate (F-17.09).</p>
<p>Bellcrank (181, 181A)</p>	<p>15-5 PH CRES 150-170 ksi</p>	<p>Passivate (F-17.09) and chrome plate to dimensions in Fig. 602.</p>
<p>Support (66,66A, 67,67A,186,186A) Arm (386,386A)</p>	<p>Al alloy</p>	<p>Chromic acid anodize, Type 1 and apply one coat of BMS 10-11, Type 1 primer (F-18.13) except omit primer from holes.</p>
<p>Retainer (256)</p>	<p>Al alloy</p>	<p>Chemical treat (colored film) and apply one coat of BMS 10-11, Type 1 primer (F-18.06).</p>

Refinish Details  
Figure 601 (Sheet 2)

**52-21-11**

REPAIR 7-1

01.1

Page 602

Oct 10/86


**BOEING**  
 COMPONENT  
 MAINTENANCE MANUAL

IPL FIG. & ITEM	MATERIAL	FINISH
<u>Fig. 2</u> (Cont)		
Door (261)	Al alloy	Anodize Decorative Nondirectional as follows: 1. Etch to obtain a nondirectional surface finish. 2. Sulfuric acid anodize. 3. The indicated surface shall match color chip BAC9512 for color and appearance (F-14.2992) except in hole and pocket. Chromic acid anodize (F-17.02) and apply one coat BMS 10-79, Type 2 primer and BMS 10-60, Type 2 gloss enamel (F-19.41-101). Apply BMS 10-60 gloss enamel (F-14.9815-101) insignia red to pocket only. Coat holes of door with MIL-L-8937 lubricant.
Handle (246)	Al alloy	Chromic acid anodize (F-17.02) except in holes and apply one coat BMS 10-79, Type 2 primer and enamel, BMS 10-60, Type 2 gloss (F-19.41-101) to pocket only. Coat holes of door with MIL-L-8937 lubricant.
Spring (241)	17-7 PH WIRE	Passivate (F-17.09).
Pin (56)	15-5 PH CRES 17-7 PH CRES 150-170 ksi	Passivate (F-17.09).
Sleeve (286,291)	15-5 PH CRES 150-170 ksi	Passivate (F-17.09) and apply MIL-L-8937 as shown in Fig. 603.
Tube (165)	15-5 PH CRES 180-200 ksi	Passivate (F-17.09) and chrome plate to a thickness of 0.0005-0.0007 inch and grind to 0.008 inch diameter with an 8 microinch AA finish.

Refinish Details  
 Figure 601 (Sheet 3)

**52-21-11**

REPAIR 7-1

01.1

Page 603

Jul 10/84



IPL FIG. & ITEM	MATERIAL	FINISH
<u>Fig. 2</u> (Cont)		
Fitting (296)	Al Alloy	Chromic acid anodize, Type 1 and apply one coat of BMS 10-11, Type 1 primer (F-18.13). Apply MIL-L-8937 lubricant to holes of fitting.
Spring (281)	17-7 PH, AMS5673	Passivate (F-17.09).
<u>Fig. 3</u>		
Filler (555,560) Fitting (303)	Al alloy	Chromic acid anodize, Type 1 and apply one coat primer, BMS 10-11, Type 1 (F-18.13). Apply one coat BMS 10-11, Type 2, color BAC702 white gloss (F-21.03), except omit primer and enamel in serrations of fitting (303).
Pin (83)	15-5PH CRES 180-200 ksi	Apply MIL-L-8937 lubricant to threads.
Support (400), Plate (315)	Al alloy	Chromic acid anodize, Type 1 and apply one coat primer, BMS 10-11, Type 1 (F-18.13).
Spring (86)	Music wire	Apply two coats primer, BMS 10-11, type 1 (F-20.03).
Retainer (260, 265,270,275)	Al alloy	Chemical treat (colored film) and apply one coat primer, BMS 10-11, Type 1 (F-18.06).
Bracket (360)	15-5PH 180-200 ksi	Cadmium plate, Type 2, class 2 and apply one coat primer, BMS 10-11, Type 1 (F-16.01).

Refinish Details  
 Figure 601 (Sheet 4)

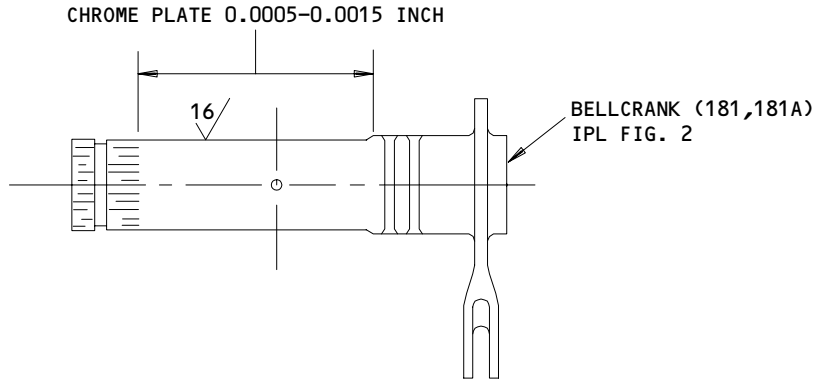
# 52-21-11

REPAIR 7-1

01.1

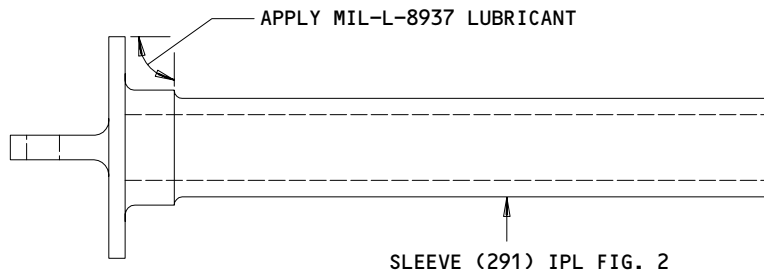
Page 604

Oct 10/86



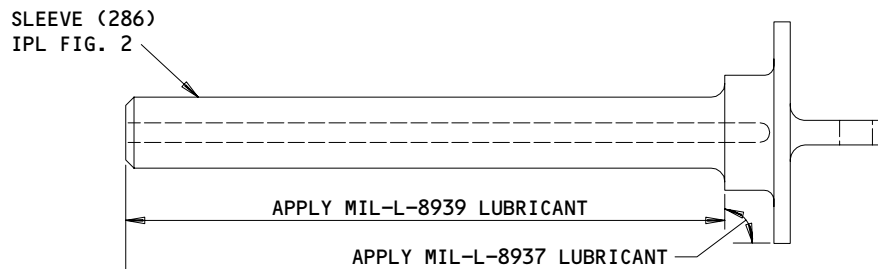
Bellcrank Refinish  
Figure 602

24688



Sleeve Lubrication  
Figure 603

24689



Sleeve Lubrication  
Figure 604

**52-21-11**

REPAIR 7-1

Page 605

Oct 10/86

01.1

24690

ASSEMBLY1. Materials

NOTE: Equivalent substitutes may be used.

- A. Grease - MIL-G-23827 (Ref 20-60-02).
- B. Lubricant - Vitrolube 1220 (Ref 20-60-03).
- C. Primer - BMS 10-11, Type 1 (Ref 20-60-02).
- D. Sealant - BMS 5-95, class C (Ref 20-60-04).

2. Assembly

- A. Use standard industry practices for assembly of this component and the following additional procedures.
- B. Apply MIL-G-23827 grease to seal (376, IPL Fig. 2), bearing (381, IPL Fig. 2), and bellcrank (116, 123, IPL Fig. 2).
- C. Tighten nut (276, 360B, IPL Fig. 2) to 12 pound-inches and back off 1/4 to 1/2 turns until slot in nut lines up with bolt hole. Secure alignment with pins (7, 356, IPL Fig. 2) per 20-50-02.
- D. Install shim (47B, 47C, IPL Fig. 1; 31, IPL Fig. 2, and 160, IPL Fig. 3) as required to reduce gap between parts to a maximum of 0.005 inch. Apply BMS 10-11, Type 1 primer to shims and install while primer is wet or dry.
- E. Apply faying surface seal of BMS 5-95 sealant between retainer (256, IPL Fig. 2) and door (261, IPL Fig. 2).
- F. Apply Vitrolube 1220 to head of pin (83, IPL Fig. 3).
- G. Install marker (397, IPL Fig. 3) on hatch assembly (80, 80A thru 80E, 81, 81A thru 81C, 81E thru 81H, IPL Fig. 1) per 20-50-05.
- H. Install bushings (321, 366, IPL Fig. 2) with wet BMS 5-95 sealant.

NOTE: Do not permit any sealant to remain on teflon lined surfaces.

- I. Fillet seal flanges of bushings (321, 366, IPL Fig. 2) with BMS 5-95 sealant.

**52-21-11**ASSEMBLY  
Page 701  
Oct 10/86

01.1



FITS AND CLEARANCES

1. Tighten nut (276, 360B, IPL Fig. 2) to 12 pound-inch.

52-21-11

FITS AND CLEARANCES

01.1 Page 801

Oct 10/86



ILLUSTRATED PARTS LIST

1. This section lists and illustrates replaceable or repairable component parts. The Illustrated Parts Catalog contains a complete explanation of the Boeing part numbering system.
2. Indentures show parts relationships as follows:

Assembly

Detail Parts for Assembly

Subassembly

Attaching Parts for Subassembly

Detail Parts for Subassembly

Detail Installation Parts (included only if installation parts may be returned to shop as part of assembly)

3. One use code letter (A, B, C, etc.,) is assigned in the EFF CODE column for each variation of top assembly. All listed parts are used on all top assemblies except when limitations are shown by use code letter opposite individual part entries.
4. Letter suffixes (alpha-variants) are added to item numbers for optional parts, Service Bulletin modification parts, configuration differences (except left- and right-hand parts), product improvement parts, and parts added between two sequential item numbers. The alpha-variant is not shown on illustrations when appearance and location of all variants of the part is the same.
5. Service Bulletin modifications are shown by the notations PRE SB XXXX and POST SB XXXX.
  - A. When a new top assembly part number is assigned by Service Bulletin, the notations appear at the top assembly level only. The configuration differences at detail part level are then shown by use code letter.
  - B. When the top assembly part number is not changed by the Service Bulletin, the notations appear at the detail part level.

6. Parts Interchangeability

Optional  
(OPT)

The parts are optional to and interchangeable with other parts having the same item number.

Supersedes, Superseded By  
(SUPSDS, SUPSD BY)

The part supersedes and is not interchangeable with the original part.

Replaces, Replaced By  
(REPLS, REPLD BY)

The part replaces and is interchangeable with, or is an alternate to, the original part.

**52-21-11**

ILLUSTRATED PARTS LIST

01

Page 1001

Jul 10/83

VENDORS

06710 VALLEY-TODECO INCORPORATED  
12975 BRADLEY AVENUE  
SYLMAR, CALIFORNIA 91342

06725 AIR INDUSTRIES CORPORATION  
12570 KNOTT STREET  
GARDEN GROVE, CALIFORNIA 92641

06950 SCREWCORP VSI CORP AEROSPACE PRODUCTS DIV FAIRCHILD IND INC  
13001 EAST TEMPLE AVE. PO BOX 730  
CITY OF INDUSTRY, CALIFORNIA 91746

08524 DEUTSCH FASTENER CORP  
1315 E GRAND AVE  
EL SEGUNDO, CALIFORNIA 90245

09455 LEAR SIEGLER INC TRANSPORT DYNAMICS DIV  
PO BOX 1953 3131 WEST SEGERSTROM STREET  
SANTA ANA, CALIFORNIA 92702

11815 TOWNSEND DIV OF TEXTRON INC CHERRY FASTENER UNIT  
BOX 2157 1224 EAST WARNER AVENUE  
SANTA ANA, CALIFORNIA 92707

15653 KAYNAR MICRODOT AEROSPACE FASTENING SYSTEM  
800 SOUTH COLLEGE BLVD PO BOX 3001  
FULLERTON, CALIFORNIA 92634

15860 NEW HAMPSHIRE BALL BEARINGS, INCORPORATED ASTRO DIVISION  
155 LEXINGTON AVENUE  
LACONIA, NEW HAMPSHIRE 03246

17943 FEDERAL MANUFACTURING CORPORATION  
6910 FARMDALE AVENUE  
NORTH HOLLYWOOD, CALIFORNIA 91605

23294 AVALON MACHINE PRODUCTS INC  
15337 ALLEN STREET  
PARAMOUNT, CALIFORNIA 90723

27624 PAUL R BRILES INC P.B. FASTENER DIV  
1700 WEST 132ND STREET PO BOX 1157  
GARDENA, CALIFORNIA 90249

**52-21-11**

ILLUSTRATED PARTS LIST  
01.1 Page 1002  
Oct 10/86


**BOEING**  
 COMPONENT  
 MAINTENANCE MANUAL
VENDORS

50294 NEW HAMPSHIRE BALL BEARINGS INC  
 9730 INDEPENDENCE AVENUE  
 CHATSWORTH, CALIFORNIA 91311

50744 SFS INDUSTRIES  
 13301 ALONDRA BLVD  
 SANTE FE SPRINGS, CALIFORNIA 90701

52828 REPUBLIC FASTENER MFG CORP  
 1300 RANCHO CONEJO BLVD  
 NEWBURY PARK, CALIFORNIA 91320

56878 SPS TECHNOLOGIES INC AEROSPACE AND INDUSTRIAL PRODUCTS DIV  
 HIGHLAND AVENUE  
 JENKINTOWN, PENNSYLVANIA 19046

60119 MONADNOCK CO THE  
 18301 ARENTH AVENUE PO BOX 1222  
 CITY OF INDUSTRY, CALIFORNIA 91749

60380 TORRINGTON CO BEARINGS DIV SUBSIDIARY OF INGERSOLL-RAND CORP  
 59 FIELD STREET  
 TORRINGTON, CONNECTICUT 06790

70265 ALL POWER MANUFACTURING COMPANY  
 13141 MOLETTE STREET  
 SANTE FE SPRINGS, CALIFORNIA 90670

71087 BOOTS ACFT NUT DIV TOWNSEND CO SEE TEXTRON INC CHERRY  
 FASTENER TOWNSEND DIV V11815

72962 ELASTIC STOP NUT A DIV OF HARTFORD INDUSTRIES INC  
 2330 VAUXHALL ROAD  
 UNION, NEW JERSEY 07083

73134 HEIM DIV INCOM INTERNATIONAL INC  
 60 ROUND HILL ROAD  
 FAIRFIELD, CONNETICUT 06430

73197 HI-SHEAR TECHNOLOGY CORP  
 2600 SKYPARK DRIVE  
 TORRANCE, CALIFORNIA 90505

77896 REXNORD INC BEARING OPERATION  
 2400 CURTIS STREET  
 DOWNERS GROVE, ILLINOIS 60515

52-21-11

 ILLUSTRATED PARTS LIST  
 01.1 Page 1003  
 Oct 10/86

VENDORS

79150 DANA CORP VICTOR PRODUCTS DIV  
1945 OHIO STREET  
LISLE, ILLINOIS 60532

80539 SPS TECHNOLOGIES INC AEROSPACE PRODUCTS DIV  
2701 SOUTH HARBOR BOULEVARD PO BOX 1259  
SANTA ANA, CALIFORNIA 92702

92215 VOI-SHAN DIV OF VSI CORP SUB OF FAIRCHILD INDUSTRIAL INC  
8463 HIGUERA STREET  
CULVER CITY, CALIFORNIA 90230

92595 AUTOMATIC SCREW MACHINE PRODUCTS CO  
PO BOX 1608 709 2ND AVENUE SE  
DECATUR, ALABAMA 35602

93907 TEXTRON INC CAMCAR DIV  
600 18TH AVENUE  
ROCKFORD, ILLINOIS 61101

94892 MASTER MACHINE PRODUCTS CORPORATION  
1551 SOUTH PRIMROSE AVE  
MONROVIA, CALIFORNIA 91016

97613 SARGENT INDUSTRIES KAHR BEARING DIVISION  
3010 NORTH SAN FERNANDO ROAD  
BURBANK, CALIFORNIA 91503

97928 DEUTSCH FASTENER CORP  
3969 PARAMONT BOULEVARD  
LAKEWOOD, CALIFORNIA 90712

**52-21-11**

ILLUSTRATED PARTS LIST  
01.1 Page 1004  
Oct 10/86




**BOEING**  
 COMPONENT  
 MAINTENANCE MANUAL

PART NUMBER	AIRLINE PART NO.	FIG.	ITEM	TTL REQ
AN960-10L		3	340	6
AN960-416L		2	236	1
AN960-516		2	360A	2
AN960C10L		2	46	1
		2	405	1
AN960D10		3	145	16
		3	380	2
AN960KD8L		1	37A	2
		1	42	2
AN960PD10		2	271	4
AN960PD10L		1	15	1
		3	300	8
AN960XC10L		2	306	1
		2	331	2
AN960XC4L		2	138	1
AN960XC416L		2	38	2
		2	106	8
		2	201	2
		2	420	8
BACB10AF5F11HS		2	361	2
BACB28AK04-044		2	51	1
BACB28AR12A064A		2	68	1
		2	188	1
		2	321	1
BACB28AR18A058A		2	366	1
BACB28X12M075		2	316	1
BACB28X3M010		2	346	2
BACB28X3M013		2	23	4
		3	410	4
BACB30LJ4U8		2	33	1
BACB30LK04-22		2	133	1
BACB30LK3-14		1	10	1
BACB30LK3DU8		2	266	4
BACB30LK3U15		2	301	1
BACB30LK3U16		2	326	2

52-21-11

ILLUSTRATED PARTS LIST

01.1

Page 1005

Oct 10/86

PART NUMBER	AIRLINE PART NO.	FIG.	ITEM	TTL REQ
BACB30LR4-12		3	430	4
BACB30LT4U14		2	101	8
		2	415	8
BACB30MY5K		1	36B	2
		2	71	2
		3	460	10
BACB30MY5K3		3	100	4
BACB30MY5K4		3	105	16
BACB30MY5K5		1	36A	2
		1	40	2
		2	12J	4
BACB30MY5K5		2	71A	2
		3	110	8
		3	190	12
BACB30MY5K6		3	10	2
		3	115	4
BACB30MY5K7		3	89	2
BACB30MY5K8		3	45	2
BACB30MY5K9		3	50	2
		3	350	2
BACB30MY6K		2	12	4
BACB30MY6K5		2	12L	2
BACB30MY6K8		2	12K	2
BACB30NM3K7		3	295	8
BACB30NN4K12		3	430A	4
BACB30NW5K4		3	120	6
BACB30NW5K5		3	195	4
BACB30NW5K6		3	20	2
BACB30NW6K5		3	130	24
		3	375	2
BACB30NW6K7		3	388	2
BACB30NX6K11		3	205	6
BACB30NX6K14		3	210	6
BACB30NX6K2		1	55	16
BACB30PW5P8		2	196	2
BACC30AG5		3	15	2
		3	25	2
		3	55	4
		3	93	2
		3	135	30
		3	200	16
		3	355	2
BACC30M5		1	39	2
		2	16J	4
		2	76	2
		3	140	8
		3	465	10

52-21-11

 ILLUSTRATED PARTS LIST  
 01.1 Page 1006  
 Oct 10/86


**BOEING**  
 COMPONENT  
 MAINTENANCE MANUAL

PART NUMBER	AIRLINE PART NO.	FIG.	ITEM	TTL REQ
BACC30M6		2	16	4
		3	155	8
		3	391	2
BACC30X6		1	60	16
		3	225	12
		3	447	2
BACF3F010K026NN		3	447	2
BACM10A11-48J		3	397	1
BACN10JC04CM		2	141	1
BACN10JC08		1	38A	2
		1	44	2
BACN10JC3		1	20	1
		3	150	16
		3	345	1
BACN10JC3CM		3	385	2
		2	311	1
		2	336	2
BACN10JC4CM		2	43	1
		2	111	8
		2	206	2
		2	425	8
		2	360B	2
BACN10JD105		2	276	4
BACN10JD3ASU		2	276	4
BACN10JN3		3	310	8
BACN10JR3F		3	290	16
BACN10JR4F		1	62A	17
BACN10JZ4A2		3	455	4
BACR15BA3AD		1	61	34
		3	285	32
		3	305	16
BACR15BA4AD		3	450	8
		2	221	14
		3	250	56
BACR15BB4AD		3	250	56
BACR15BB6AD		1	75	10
BACR15CE4D		3	255	8
BACR15CE6K		3	365	6
BACR15FV6KE		3	370	26
BACS40R07B17F		3	160	4
BACS40R08B80F		3	420	1
BACS40R08C08F		3	30	1
BACS40R08F11F		3	425	2
BACS40R14E15F		1	47B	1
BACS40R14E17F		1	47A	1
BACS40R15E30F		3	320	2
BACS40R18F71F		2	65A	1
BACS40R8B26F		2	31	2
BACW10CA3CC		3	215	24

52-21-11

ILLUSTRATED PARTS LIST

01.1

Page 1007

Oct 10/86

PART NUMBER	AIRLINE PART NO.	FIG.	ITEM	TTL REQ
BACW10CA3CV		3	220	24
BRFM20A3		3	310	8
BRF200A3		3	290	16
BRF200A4		1	62A	17
BRH10A08		1	38A	2
		1	44	2
BRH10A3		1	20	1
		3	150	16
		3	345	1
		3	385	2
BR1110C04M		2	141	1
BR1110C3M		2	311	1
		2	336	2
BR1110C4M		2	43	1
		2	111	8
		2	206	2
		2	425	8
B30MY5K3		3	100	4
B30MY5K4		3	105	16
B30MY5K5		1	36A	2
		1	40	2
		2	12J	4
		2	71A	2
		3	110	8
		3	190	12
B30MY5K6		3	10	2
		3	115	4
B30MY5K7		3	89	2
B30MY5K8		3	45	2
B30MY5K9		3	50	2
		3	350	2
B30MY6K5		2	12L	2
B30NW5K4		3	120	6
B30NW5K5		3	195	4
B30NW5K6		3	20	2
B30NW6K5		3	130	24
		3	375	2
B30NW6K7		3	388	2
F1968-4BAC		3	455	4
F5000-3BAC		3	290	16
F5000-4BAC		1	62A	17
HL10VAZ5-3		3	100	4

52-21-11

 ILLUSTRATED PARTS LIST  
 01.1 Page 1008  
 Oct 10/86


**BOEING**  
 COMPONENT  
 MAINTENANCE MANUAL

PART NUMBER	AIRLINE PART NO.	FIG.	ITEM	TTL REQ
HL10VAZ5-4		3	105	16
HL10VAZ5-5		1	36A	2
		1	40	2
		2	12J	4
		2	71A	2
		3	110	8
		3	190	12
HL10VAZ5-6		3	10	2
		3	115	4
HL10VAZ5-7		3	89	2
HL10VAZ5-8		3	45	2
HL10VAZ5-9		3	50	2
		3	350	2
HL10VAZ6-5		2	12L	2
HL11VAZ5-4		3	120	6
HL11VAZ5-5		3	195	4
HL11VAZ5-6		3	20	2
HL11VAZ6-5		3	130	24
		3	375	2
HL11VAZ6-7		3	388	2
HL11V6-5		3	130	24
		3	375	2
HL11V6-7		3	388	2
HL1187-6		1	60	16
		3	225	12
HL12VAZ6-11		3	205	6
HL12VAZ6-14		3	210	6
HL12VAZ6-2		1	55	16
HL70-5		1	39	2
		2	16J	4
		2	76	2
		3	140	8
		3	465	10

52-21-11

 ILLUSTRATED PARTS LIST  
 01.1 Page 1009  
 Oct 10/86

PART NUMBER	AIRLINE PART NO.	FIG.	ITEM	TTL REQ
HL79-6		2	16	4
		3	155	8
		3	391	2
HL82-5APBW		3	15	2
		3	25	2
		3	55	4
		3	93	2
		3	135	30
		3	200	16
		3	355	2
HL87-6		1	60	16
		3	225	12
H01-04BAC		2	141	1
H01-3BAC		2	311	1
H01-4BAC		2	336	2
		2	43	1
		2	111	8
		2	206	2
		2	425	8
H10-08BAC		1	38A	2
		1	44	2
H10-3BAC		1	20	1
		3	150	16
		3	345	1
H10-3BAC		3	385	2
JT1211		2	413	2
JT1813		2	381	2
K29646-3		3	220	24
K29913-3		3	215	24
L8005K3		3	100	4
L8005K4		3	105	16

# 52-21-11

 ILLUSTRATED PARTS LIST  
 01.1 Page 1010  
 Oct 10/86


**BOEING**  
 COMPONENT  
 MAINTENANCE MANUAL

PART NUMBER	AIRLINE PART NO.	FIG.	ITEM	TTL REQ
L8005K5		1	36A	2
		1	40	2
		2	12J	4
		2	71A	2
		3	110	8
		3	190	12
L8005K6		3	10	2
		3	115	4
L8005K7		3	89	2
L8005K8		3	45	2
L8005K9		3	50	2
		3	350	2
L8006K5		2	12L	2
L802-6K11		3	205	6
L802-6K14		3	210	6
L802-6K2		1	55	16
L803-5K4		3	120	6
L803-5K5		3	195	4
L803-5K6		3	20	2
L803-6-5		3	130	24
		3	375	2
L803-6-7		3	388	2
L803-6K5		3	130	24
		3	375	2
L803-6K7		3	388	2
MF1000-3BAC		3	310	8
MS20392-2C15		2	41	1
		2	400	1
MS20615-3M		2	156A	2
MS24665-132		2	231	1
MS24665-134		2	356	2
MS24665-153		2	7	4
		2	36	1
		2	193	4
		2	395	1
MS27253F1		3	394	1
NAS428-3-5		3	335	1
NAS43HT3-42		1	30	1
NAS516-1A		2	176	1
		2	412	1
		3	60	2

52-21-11

 ILLUSTRATED PARTS LIST  
 01.1 Page 1011  
 Oct 10/86

PART NUMBER	AIRLINE PART NO.	FIG.	ITEM	TTL REQ
NB12BAM2		3	70	2
NS103203-02		3	290	16
NS103203-048		1	62A	17
NS103218-02		3	310	8
NS103224-048		3	455	4
NS202101-02		1	20	1
		3	150	16
		3	345	1
		3	385	2
NS202101-82		1	38A	2
		1	44	2
NS202101SE02		2	311	1
		2	336	2
NS202101SE048		2	43	1
		2	111	8
		2	206	2
		2	425	8
NS202101SE40		2	141	1
RMF9201-3		3	290	16
RMF9201-4		1	62A	17
RMF9201M3		3	310	8
RMF9219-4		3	455	4
RMLH9075-3W		1	20	1
		3	150	16
		3	345	1
		3	385	2
RMLH9075-82W		1	38A	2
		1	44	2
SF15-120-110		1	77A	1
T6C1032JM		2	311	1
		2	336	2
T6C428JM		2	43	1
		2	111	8
		2	206	2
T6C428JM		2	425	8
T6C440JM		2	141	1
T6S1032J		1	20	1
		3	150	16
		3	345	1
		3	385	2
T6S832J		1	38A	2
		1	44	2
T8091S1032		3	290	16
T8091S428		1	62A	17
T8124S3S		3	310	8

52-21-11

 ILLUSTRATED PARTS LIST  
 01.1 Page 1012  
 Oct 10/86




**BOEING**  
 COMPONENT  
 MAINTENANCE MANUAL

PART NUMBER	AIRLINE PART NO.	FIG.	ITEM	TTL REQ
VN152A1-02		3	290	16
VN152A1-048		1	62A	17
VN252A02		3	310	8
VN303A02		1	20	1
		3	150	16
		3	345	1
		3	385	2
VN303A82		1	38A	2
		1	44	2
VN303D02		2	311	1
		2	336	2
VN303D048		2	43	1
		2	111	8
		2	206	2
		2	425	8
VN303D40		2	141	1
WJ121616		2	376	2
109LH9075-3W		2	311	1
		2	336	2
109LH9075-4W		2	43	1
		2	111	8
		2	206	2
		2	425	8
109LH9075-40W		2	141	1
140T2639-3		3	83	6
145T6003-1		3	490	4
145T6003-3		3	505	4
145T6003-4		3	495	4
145T6003-5		3	510	4
145T6004-1		3	515	2
145T6004-10		3	551	2
145T6004-3		3	540	2
145T6004-4		3	525	2
145T6004-6		3	545	2
145T6004-7		3	530	2
145T6004-8		3	550	2
145T6004-9		3	531	2
145T6010-7		2	116	1
		2	430	1
145T6010-8		2	123	1
		2	435	1
145T6011-1		3	35	1
145T6011-2		3	40	1
145T6011-3		3	75	1

52-21-11

 ILLUSTRATED PARTS LIST  
 01.1 Page 1013  
 Oct 10/86

PART NUMBER	AIRLINE PART NO.	FIG.	ITEM	TTL REQ
145T6011-4		3	80	1
145T6012-2		2	216	1
145T6012-3		2	226	1
145T6013-2		2	261	1
145T6014-4		3	400	1
145T6014-5		3	405	1
145T6014-6		3	415	1
145T6016-1		1	1	RF
145T6016-101		1	1A	RF
145T6016-102		1	5A	RF
145T6016-103		1	81	1
		3	1D	RF
145T6016-104		1	80D	1
		3	1H	RF
145T6016-105		1	1D	RF
145T6016-106		1	5D	RF
145T6016-110		1	80E	1
		3	1J	RF
145T6016-112		1	81E	1
		3	1L	RF
145T6016-113		1	1F	RF
145T6016-114		1	5F	RF
145T6016-115		1	81F	1
		3	1M	RF
145T6016-116		1	81G	1
		3	1N	RF
145T6016-117		1	1G	RF
145T6016-118		1	5G	RF
145T6016-119		1	81H	1
		3	1P	RF
145T6016-2		1	5	RF

# 52-21-11

 ILLUSTRATED PARTS LIST  
 01.1 Page 1014  
 Oct 10/86


**BOEING**  
 COMPONENT  
 MAINTENANCE MANUAL

PART NUMBER	AIRLINE PART NO.	FIG.	ITEM	TTL REQ
145T6016-27		3	555	4
		3	560	2
145T6016-3		1	80	1
		3	1	RF
145T6016-34		3	270	1
145T6016-35		3	275	1
145T6016-37		1	80A	1
		3	1A	RF
145T6016-38		1	81A	1
		3	1E	RF
145T6016-41		1	1B	RF
145T6016-42		1	5B	RF
145T6016-43		1	1C	RF
145T6016-44		1	5C	RF
145T6016-45		1	80C	1
		3	1C	RF
145T6016-47		1	81C	1
		3	1G	RF
145T6016-5		3	260	1
145T6016-6		3	265	1
145T6016-7001		3	5	1
145T6019-1		3	500	4
		3	535	2
145T6021-1		3	315	2
145T6031-1		2	165	1
		2	445	1
145T6032-1		2	56	1
145T6032-2		2	61	1
		2	410	1
145T6033-1		2	286	2
145T6034-1		2	291	2

52-21-11

 ILLUSTRATED PARTS LIST  
 01.1 Page 1015  
 Oct 10/86

PART NUMBER	AIRLINE PART NO.	FIG.	ITEM	TTL REQ
145T6035-1		2	386	1
145T6036-5		2	341	1
145T6036-6		2	351	1
145T6037-1		2	281	2
145T6040-3		2	21	1
145T6040-4		2	27	1
145T6042-2		2	246	1
145T6043-1		2	251	1
145T6044-3		2	171	1
145T6044-4		2	181	1
145T6044-5		2	171A	1
145T6044-6		2	181A	1
145T6045-10		2	67A	1
145T6045-11		2	187A	1
145T6045-12		2	189	1
145T6045-13		2	67	1
145T6045-14		2	187	1
145T6045-5		2	186	1
145T6045-6		2	66	1
		2	69	1
145T6045-7		2	186A	1
145T6045-8		2	66A	1
		2	69A	1
145T6045-9		2	189A	1
145T6046-2		2	296	1
145T6047-4		2	146	1
145T6047-5		2	161	1
145T6049-1		2	256	1
145T6050-2		1	35	1
145T6053-2		2	241	1
145T6058-1		2	391	1
145T6060-1		2	1	RF
		3	470	1
145T6060-11		2	1C	RF
		3	480A	1
145T6060-12		2	91C	1
145T6060-13		2	1E	RF
		3	485A	1
145T6060-15		2	1F	RF
		3	485	1

52-21-11

 ILLUSTRATED PARTS LIST  
 01.1 Page 1016  
 Oct 10/86


**BOEING**  
 COMPONENT  
 MAINTENANCE MANUAL

PART NUMBER	AIRLINE PART NO.	FIG.	ITEM	TTL REQ
145T6060-5		2	1B	RF
		3	475	1
145T6060-6		2	91	1
145T6060-7		2	1A	RF
		3	470A	1
		3	480	1
145T6060-7001		2	191	1
145T6060-8		2	91A	1
145T6060-9		2	211	1
145T6063-2		3	303	2
145T6066-1		2	128	2
		2	440	2
145T6071-1		2	151	2
145T6089-1		3	440	1
145T6089-2		3	445	8
145T6090-1		3	360	1
145T6092-1		2	411	1
145T6092-2		2	414	1
145T6093-1		2	341A	1
145T6093-2		2	351A	1
145T6094-1		2	386A	1
414T1001-1		1	50	1
414T1001-2		1	63	1
414T1001-3		1	65	1
414T1001-4		1	70	1
63123K31		2	371	2
66-16691-2		3	86	6
66014-5		1	39	2
		2	16J	4
		2	76	2
		3	140	8
		3	465	10
66014-6		2	16	4
		3	155	8
		3	391	2
69-69950-1		1	25	1
70188-3		3	220	24
70191-3		3	215	24
922007-3		3	220	24
922008-3		3	215	24
942007-3		3	220	24
942008-3		3	215	24

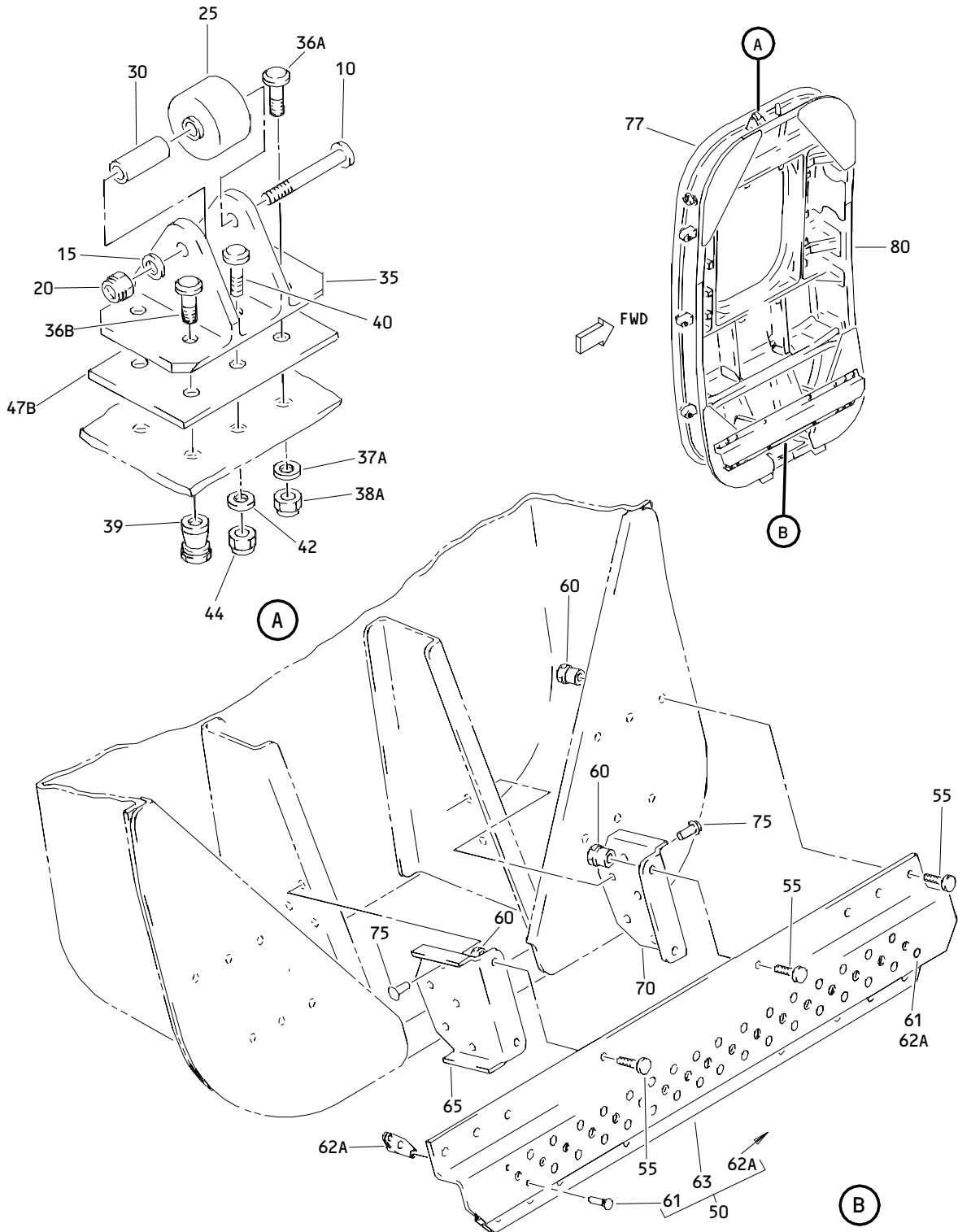
52-21-11

 ILLUSTRATED PARTS LIST  
 01.1 Page 1017  
 Oct 10/86

PART NUMBER	AIRLINE PART NO.	FIG.	ITEM	TTL REQ
96-02		1	20	1
		3	150	16
		3	345	1
		3	385	2
96-82		1	38A	2
		1	44	2
97E02		2	311	1
		2	336	2
97E40		2	141	1
97E48		2	43	1
		2	111	8
		2	206	2
		2	425	8

# 52-21-11

 ILLUSTRATED PARTS LIST  
 01.1 Page 1018  
 Oct 10/86



Overwing Escape Hatch Assembly  
 Figure 1

**52-21-11**

ILLUSTRATED PARTS LIST  
 01.1 Page 1020  
 Oct 10/86


**BOEING**  
 COMPONENT  
 MAINTENANCE MANUAL

FIG. & ITEM	PART NO.	AIRLINE PART NUMBER	NOMENCLATURE 1234567	EFF CODE	QTY PER ASSY
01- -1	145T6016-1		HATCH ASSY-OVERWING ESCAPE HATCH (LH)	A	RF
-1A	145T6016-101		HATCH ASSY-OVERWING ESCAPE HATCH (LH)	C	RF
-1B	145T6016-41		HATCH ASSY-OVERWING ESCAPE HATCH (LH)	E	RF
-1C	145T6016-43		HATCH ASSY-OVERWING ESCAPE HATCH (LH)	F	RF
-1D	145T6016-105		HATCH ASSY-OVERWING ESCAPE HATCH (LH)	J	RF
-1E	145T6016-107		DELETED		
R -1F	145T6016-113		HATCH ASSY-OVERWING ESCAPE HATCH (LH)	K	RF
R -1G	145T6016-117		HATCH ASSY-OVERWING ESCAPE HATCH (LH)	N	RF
-5	145T6016-2		HATCH ASSY-OVERWING ESCAPE HATCH (RH)	B	RF
-5A	145T6016-102		HATCH ASSY-OVERWING ESCAPE HATCH (RH)	D	RF
-5B	145T6016-42		HATCH ASSY-OVERWING ESCAPE HATCH (RH)	G	RF
-5C	145T6016-44		HATCH ASSY-OVERWING ESCAPE HATCH (RH)	H	RF
-5D	145T6016-106		HATCH ASSY-OVERWING ESCAPE HATCH (RH)	L	RF
-5E	145T6016-108		DELETED		
R -5F	145T6016-114		HATCH ASSY-OVERWING ESCAPE HATCH (RH)	M	RF
R -5G	145T6016-118		HATCH ASSY-OVERWING ESCAPE HATCH (RH)	P	RF

52-21-11

 ILLUSTRATED PARTS LIST  
 01.1 Page 1021  
 Oct 10/86



FIG. & ITEM	PART NO.	AIRLINE PART NUMBER	NOMENCLATURE 1234567	EFF CODE	QTY PER ASSY
R 01-10	BACB30LK3-14		.BOLT- (V06710) (SPEC BACB30LK3-14) (OPT BACB30LK3-14 (V06725)) (OPT BACB30LK3-14 (V06950)) (OPT BACB30LK3-14 (V08524)) (OPT BACB30LK3-14 (V17943)) (OPT BACB30LK3-14 (V27624)) (OPT BACB30LK3-14 (V80539)) (OPT BACB30LK3-14 (V92215)) (OPT BACB30LK3-14 (V97928))		1
R 15	AN960PD10L		.WASHER		1
R 20	H10-3BAC		.NUT- (V15653) (SPEC BACN10JC3) (OPT NS202101-02 (V80539)) (OPT RMLH9075-3W (V72962)) (OPT T6S1032J (V71087)) (OPT VN303A02 (V92215)) (OPT 96-02 (V80539)) (OPT BRH10A3 (V52828))		1
R 25	69-69950-1		.ROLLER		1
R 30	NAS43HT3-42		.SPACER		1
R 35	145T6050-2		.CHANNEL		1
			ATTACHING PARTS		
	36	BACB30NT2K6	DELETED		

52-21-11

ILLUSTRATED PARTS LIST

01.1

Page 1022

Oct 10/86


**BOEING**  
 COMPONENT  
 MAINTENANCE MANUAL

FIG. & ITEM	PART NO.	AIRLINE PART NUMBER	NOMENCLATURE 1234567	EFF CODE	QTY PER ASSY
R 01-36A	HL10VAZ5-5		.BOLT- (V56878) (SPEC BACB30MY5K5) (OPT B30MY5K5 (V97928)) (OPT HL10VAZ5-5 (V73197)) (OPT HL10VAZ5-5 (V92215)) (OPT HL10VAZ5-5 (V97928)) (OPT L8005K5 (V06725)) (OPT HL10VAZ5-5 (V08524)) (USED WITH ITEMS 37A, 38A)		2
	36B BACB30MY5K		.BOLT- (SIZE DETERMINE ON INST) (USED WITH ITEM 39)		2
R 37	AN960KD8L		DELETED		
R 37A	AN960KD8L		.WASHER- (USED WITH ITEM 36A)		2
R 38	H10-08BAC		DELETED		
R 38A	H10-08BAC		.NUT- (V15653) (SPEC BACN10JC08) (OPT NS202101-82 (V80539)) (OPT RMLH9075-82W (V72962)) (OPT T6S832J (V71087)) (OPT VN303A82 (V92215)) (OPT 96-82 (V80539)) (OPT BRH10A08 (V52828)) (USED WITH ITEM 36A)		2

52-21-11

ILLUSTRATED PARTS LIST

01.1

Page 1023

Oct 10/86

FIG. & ITEM	PART NO.	AIRLINE PART NUMBER	NOMENCLATURE 1234567	EFF CODE	QTY PER ASSY
R 01-39	HL70-5		.COLLAR- (V56878) (SPEC BACC30M5) (OPT HL70-5 (V73197)) (OPT HL70-5 (V92215)) (OPT 66014-5 (V56878)) (USED WITH ITEM 36B)		2
R 40	HL10VAZ5-5		.BOLT- (V56878) (SPEC BACB30MY5K5) (OPT B30MY5K5 (V97928)) (OPT HL10VAZ5-5 (V73197)) (OPT HL10VAZ5-5 (V92215)) (OPT HL10VAZ5-5 (V97928)) (OPT L8005K5 (V06725)) (OPT HL10VAZ5-5 (V08524))		2
R 42	AN960KD8L		.WASHER		2
R 44	H10-08BAC		.NUT- (V15653) (SPEC BACN10JC08) (OPT NS202101-82 (V80539)) (OPT RMLH9075-82W (V72962)) (OPT T6S832J (V71087)) (OPT VN303A82 (V92215)) (OPT 96-82 (V80539)) (OPT BRH10A08 (V52828))		2
45	HL70-5		DELETED		
47	BACS40R14E24F		DELETED		

52-21-11

ILLUSTRATED PARTS LIST

01.1

Page 1024

Oct 10/86


**BOEING**  
 COMPONENT  
 MAINTENANCE MANUAL

FIG. & ITEM	PART NO.	AIRLINE PART NUMBER	NOMENCLATURE 1234567	EFF CODE	QTY PER ASSY
R 01-47A	BACS40R14E17F		.SHIM- (USED WITH ITEMS 80A, 80B, 80D, 81A, 81B)	A-J,L	1
R 47B	BACS40R14E15F		.SHIM- (USED WITH ITEMS 80, 80C, 80E, 81, 81C)	A-J,L	1
R -47C	BACS40R14E17F		.SHIM- (USED WITH ITEMS 81E, 81F, 81G, 81H) -----*	K-P	1
R 50	414T1001-1		.BRACKET ASSY-ARMREST ATTACHING PARTS		1
R 55	HL12VAZ6-2		.BOLT- (V56878) (SPEC BACB30NX6K2) (OPT HL12VAZ6-2 (V73197)) (OPT HL12VAZ6-2 (V92215)) (OPT HL12VAZ6-2 (V97928)) (OPT L802-6K2 (V06725)) (OPT HL12VAZ6-2 (V08524))		16
R 60	HL1187-6		.COLLAR- (V73197) (SPEC BACC30X6) (OPT HL87-6 (V73197)) (OPT HL87-6 (V92215)) (OPT HL1187-6 (V56878)) (OPT HL1187-6 (V92215)) (OPT HL87-6 (V56878)) -----*		16
61	BACR15BA3AD		..RIVET- (SIZE DETERMINE ON INST)		34
62	BACW10JR4F		DELETED		

52-21-11

 ILLUSTRATED PARTS LIST  
 01.1 Page 1025  
 Oct 10/86

FIG. & ITEM	PART NO.	AIRLINE PART NUMBER	NOMENCLATURE 1234567	EFF CODE	QTY PER ASSY
R 01-62A	F5000-4BAC		..NUTPLATE- (V15653) (SPEC BACN10JR4F) (OPT NS103203-048 (V80539)) (OPT RMF9201-4 (V72962)) (OPT T8091S428 (V11815)) (OPT VN152A1-048 (V92215)) (OPT BRF200A4 (V52828))		17
R 63	414T1001-2		..BRACKET-ARMREST		1
R 65	414T1001-3		.BRACKET-ARMREST		1
R 70	414T1001-4		.BRACKET-ARMREST ATTACHING PARTS		1
	75	BACR15BB6AD	.RIVET- (SIZE DETERMINE ON INST) -----*-----		10
R 77	SF15-120-3		.SEAL- (V50744) (SPEC S140T263-3)	A-D,F ,H	1
R -77A	SF15-120-110		.SEAL- (V50744) (SPEC S140T263-110)	J-P	1
R -77B	SF15-120-3		.SEAL- (REPLD BY ITEM 77C) (V50744) (SPEC S140T263-3)	AM,AN	1
R -77C	SF15-120-110		.SEAL- (REPLS ITEM 77B) (V50744) (SPEC S140T263-110)	AM,AN	1
	80	145T6016-3	.HATCH ASSY- (OPT ITEM 80A) (FOR DETAILS SEE FIG. 3)	A,B	1
	-80A	145T6016-37	.HATCH ASSY- (OPT ITEM 80) (FOR DETAILS SEE FIG. 3)	A,B	1
	-80B	145T6016-37	.HATCH ASSY- (OPT ITEM 80C) (FOR DETAILS SEE FIG. 3)	E,G	1

52-21-11

 ILLUSTRATED PARTS LIST  
 01.1 Page 1026  
 Oct 10/86


**BOEING**  
 COMPONENT  
 MAINTENANCE MANUAL

FIG. & ITEM	PART NO.	AIRLINE PART NUMBER	NOMENCLATURE 1234567	EFF CODE	QTY PER ASSY
01- -80C	145T6016-45		.HATCH ASSY- (OPT ITEM 80B) (FOR DETAILS SEE FIG. 3)	E,G	1
-80D	145T6016-104		.HATCH ASSY- (OPT ITEM 80E) (FOR DETAILS SEE FIG. 3)	J,L	1
-80E	145T6016-110		.HATCH ASSY- (OPT ITEM 80D) (FOR DETAILS SEE FIG. 3)	J,L	1
81	145T6016-103		.HATCH ASSY- (OPT ITEM 81A) (FOR DETAILS SEE FIG. 3)	C,D	1
-81A	145T6016-38		.HATCH ASSY- (OPT ITEM 81) (FOR DETAILS SEE FIG. 3)	C,D	1
-81B	145T6016-38		.HATCH ASSY- (OPT ITEM 81C) (FOR DETAILS SEE FIG. 3)	F,H	1
-81C	145T6016-47		.HATCH ASSY- (OPT ITEM 81B) (FOR DETAILS SEE FIG. 3)	F,H	1
-81D	145T6016-109		DELETED		
R -81E	145T6016-112		.HATCH ASSY- (OPT ITEM 81F) (FOR DETAILS SEE FIG. 3)	K,M	1
R -81F	145T6016-115		.HATCH ASSY- (OPT ITEM 81E) (FOR DETAILS SEE FIG. 3)	K,M	1
R -81G	145T6016-116		.HATCH ASSY- (OPT ITEM 81H) (FOR DETAILS SEE FIG. 3)	N,P	1
R -81H	145T6016-119		.HATCH ASSY- (OPT ITEM 81G) (FOR DETAILS SEE FIG. 3)	N,P	1
82	HL10VAZ5-6		DELETED		
83	HL82-5APBW		DELETED		
85	145T6011-1		DELETED		
90	145T6011-2		DELETED		
95	HL10VAZ5-8		DELETED		
97	HL10VAZ5-9		DELETED		
100	HL82-5APBW		DELETED		
105	HL11VAZ5-6		DELETED		
110	HL11VAZ5-8		DELETED		
115	HL82-5APBW		DELETED		

52-21-11

ILLUSTRATED PARTS LIST

01.1

Page 1027

Oct 10/86

FIG. & ITEM	PART NO.	AIRLINE PART NUMBER	NOMENCLATURE 1234567	EFF CODE	QTY PER ASSY
01-					
118	BACS40R08C08F		DELETED		
120	NAS516-1A		DELETED		
125	ABW12-101		DELETED		
-125A	NB12BAM2		DELETED		
-125B	NB12BM2		DELETED		
-125C	NB12BAM2		DELETED		
130	145T6011-3		DELETED		
-135	145T6011-4		DELETED		
140	140T2639-3		DELETED		
145	66-16691-1		DELETED		
145A	66-16691-2		DELETED		
150	145T6003-1		DELETED		
155	HL10VAZ5-3		DELETED		
160	HL10VAZ5-4		DELETED		
165	HL10VAZ5-5		DELETED		
170	HL10VAZ5-6		DELETED		
175	HL11VAZ5-4		DELETED		
180	HL11VAZ5-6		DELETED		
180A	HL10VAZ5-7		DELETED		
185	BACB30NW6K		DELETED		
185A	HL11VAZ6-5		DELETED		
190	HL82-5APBW		DELETED		
195	HL70-5		DELETED		
196	AN960D10		DELETED		
197	H10-3BAC		DELETED		
200	HL79-6		DELETED		
202	BACS40R07B17		DELETED		
202A	BACS40R07B17F		DELETED		
205	145T6019-1		DELETED		
210	145T6003-3		DELETED		
215	145T6004-1		DELETED		
216	145T6016-27		DELETED		
-217	145T6004-4		DELETED		
-217A	145T6004-4		DELETED		
220	HL10VAZ5-5		DELETED		
225	HL11VAZ5-5		DELETED		
230	HL82-5APBW		DELETED		
235	HL12VAZ6-11		DELETED		
240	HL12VAZ6-14		DELETED		
255	K29913-3		DELETED		
260	K29646-3		DELETED		
265	HL1187-6		DELETED		
270	145T6019-1		DELETED		
275	145T6004-3		DELETED		
-276	145T6004-6		DELETED		

52-21-11

ILLUSTRATED PARTS LIST

01.1

Page 1028

Oct 10/86


**BOEING**  
 COMPONENT  
 MAINTENANCE MANUAL

FIG. & ITEM	PART NO.	AIRLINE PART NUMBER	NOMENCLATURE 1234567	EFF CODE	QTY PER ASSY
01-					
280	S140T263-3		DELETED		
280A	SF15-120-3		DELETED		
281	BACR15BB4AD		DELETED		
281A	BACR15CE4D		DELETED		
282	145T6016-5		DELETED		
282G	145T6016-6		DELETED		
283	145T6016-7		DELETED		
283A	145T6016-34		DELETED		
283G	145T6016-8		DELETED		
283H	145T6016-35		DELETED		
285	145T6063-1		DELETED		
285A	145T6063-2		DELETED		
287	BACR15BA3AD		DELETED		
288	F5000-3BAC		DELETED		
290	BACB30NM3K7		DELETED		
295	AN960PD10L		DELETED		
300	T8124S3S		DELETED		
305	BACR15BA3AD		DELETED		
310	145T6021-1		DELETED		
315	BACS40R15E30F		DELETED		
315J	BACB30LR4-12		DELETED		
316	145T6089-1		DELETED		
316L	145T6089-2		DELETED		
317	BACR15BC3		DELETED		
317L	F1968-4BAC		DELETED		
318	BACB30MY5K		DELETED		
318M	HL70-5		DELETED		
319	145T6046-2		DELETED		
320	145T6060-1		DELETED		
-320A	145T6060-7		DELETED		
-320B	145T6060-5		DELETED		
320C	BACB30MY5K9		DELETED		
325	BACM10A11-48J		DELETED		
330	MS27253F1		DELETED		
335	NAS428-3-4		DELETED		
335A	NAS428-3-5		DELETED		
340	AN960-10L		DELETED		
345	H10-3BAC		DELETED		
350	HL10VAZ5-7		DELETED		
350A	BACB30NY5K7		DELETED		
350B	HL10VAZ5-7		DELETED		
350C	HL10VAZ5-9		DELETED		
355	HL87DU5		DELETED		
355A	HL82-5APBW		DELETED		
360	145T6090-1		DELETED		

52-21-11

ILLUSTRATED PARTS LIST

01.1

Page 1029

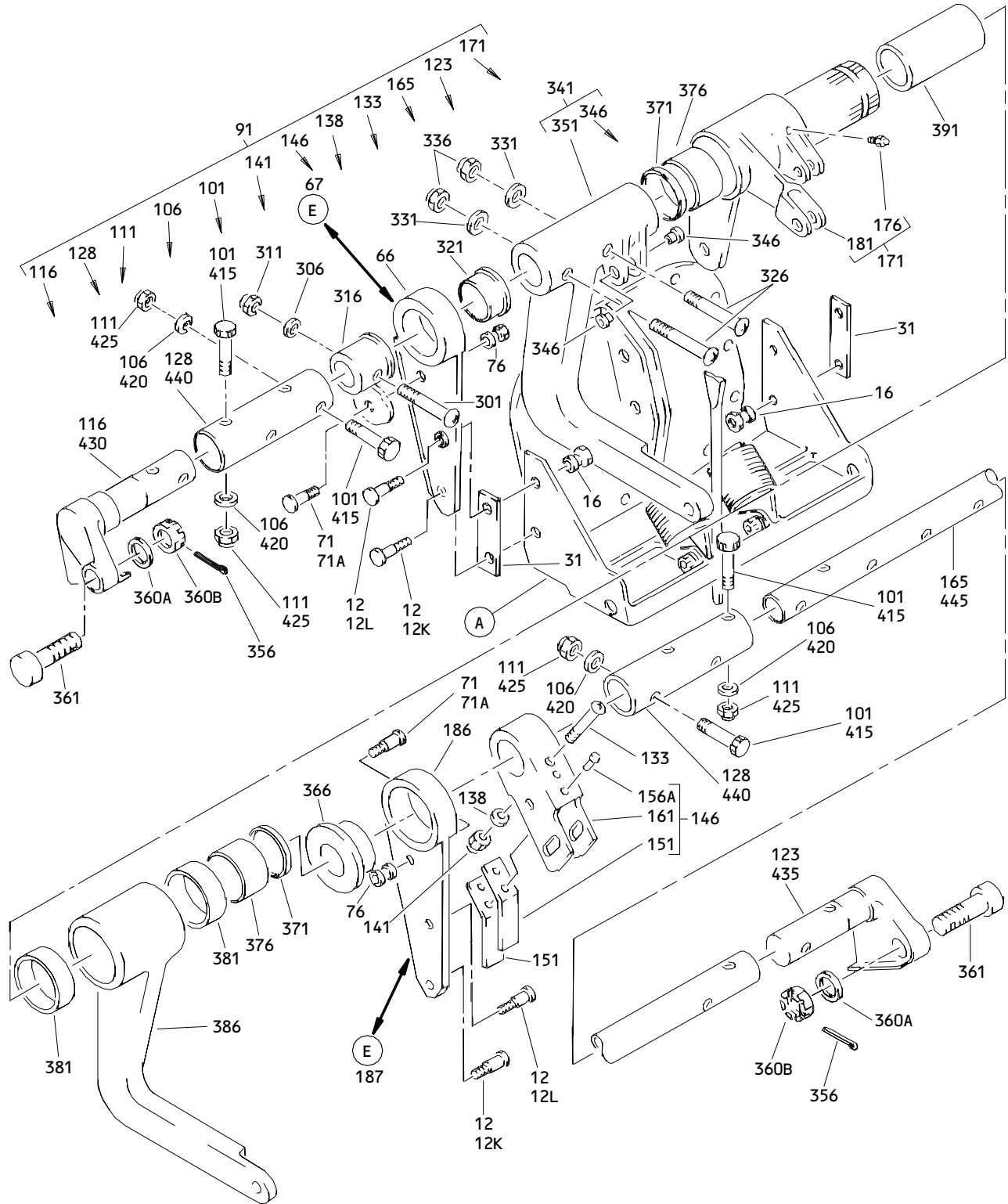
Oct 10/86



FIG. & ITEM	PART NO.	AIRLINE PART NUMBER	NOMENCLATURE 1234567	EFF CODE	QTY PER ASSY
01-					
365	BACR15CE6K		DELETED		
370	BACR15FV6KE		DELETED		
375	HL11VAZ6-5		DELETED		
380	AN960D10		DELETED		
385	H10-3BAC		DELETED		
390	HL11VAZ6-7		DELETED		
395	HL79-6		DELETED		
400	145T6014-4		DELETED		
405	145T6014-5		DELETED		
410	BACB28X3M013		DELETED		
415	145T6014-6		DELETED		
420	BACS40R08B80F		DELETED		
425	BACS40R08F11F		DELETED		

# 52-21-11

 ILLUSTRATED PARTS LIST  
 01.1 Page 1030  
 Oct 10/86

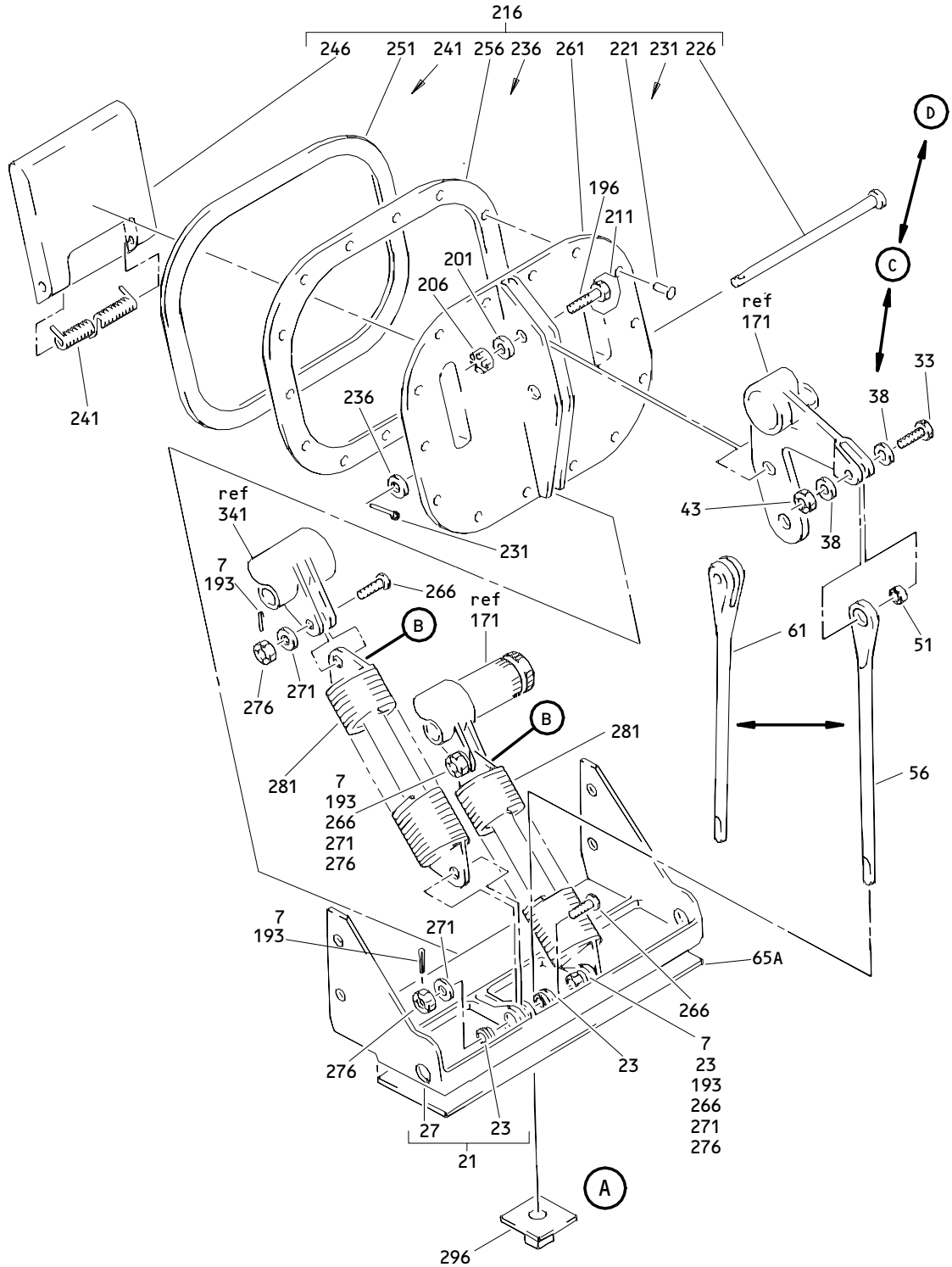


Overwing Escape Hatch Mechanism Assembly  
 Figure 2 (Sheet 1)

**52-21-11**

ILLUSTRATED PARTS LIST  
 01.1 Page 1032  
 Oct 10/84

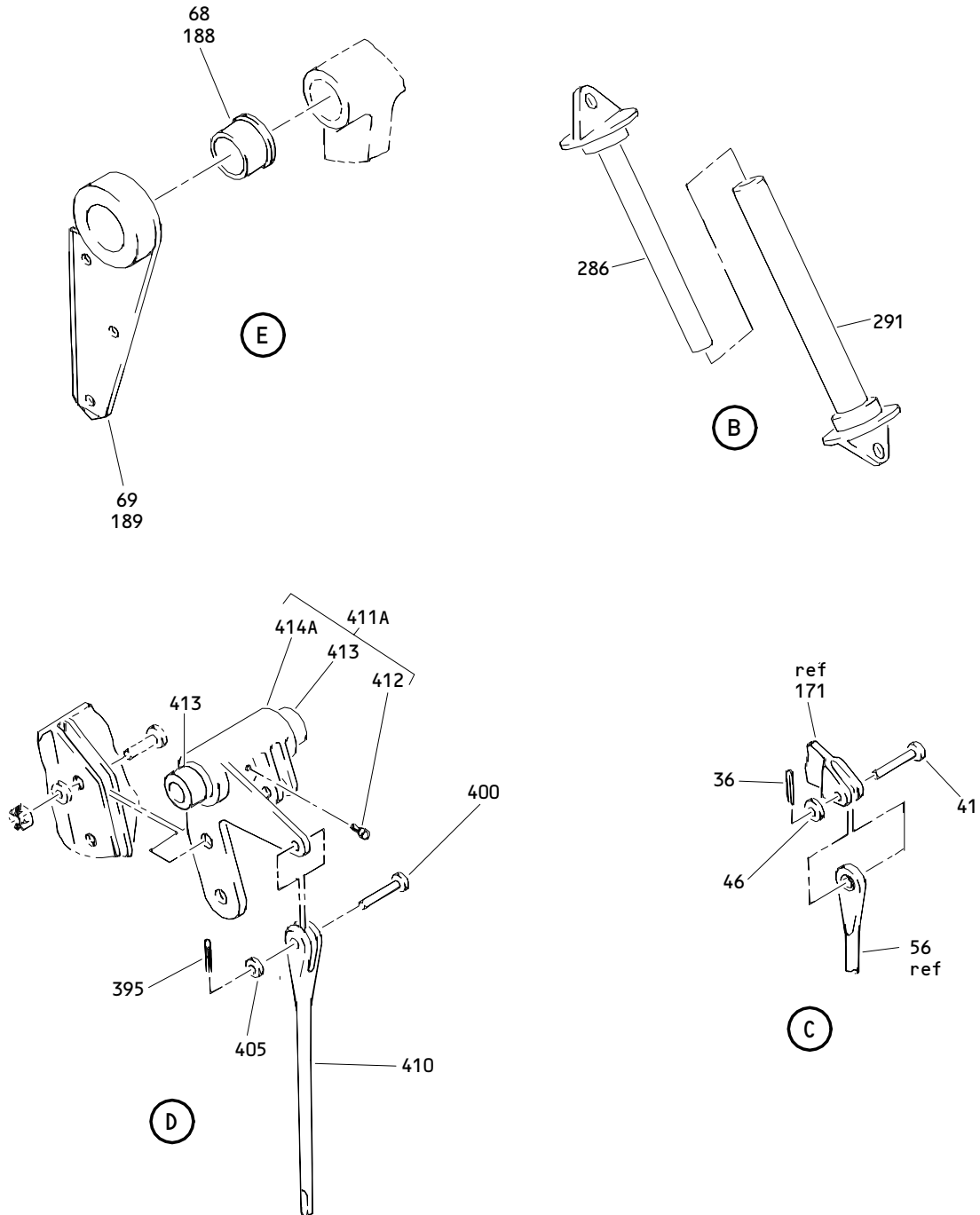
**BOEING**  
 COMPONENT  
 MAINTENANCE MANUAL



Overwing Escape Hatch Mechanism Assembly  
 Figure 2 (Sheet 2)

**52-21-11**

ILLUSTRATED PARTS LIST  
 01.1 Page 1033  
 Oct 10/86



Overwing Escape Hatch Mechanism Installation  
 Figure 2 (Sheet 3)

**52-21-11**

ILLUSTRATED PARTS LIST  
 01.1 Page 1034  
 Jul 01/90


**BOEING**  
 COMPONENT  
 MAINTENANCE MANUAL

FIG. & ITEM	PART NO.	AIRLINE PART NUMBER	NOMENCLATURE 1234567	EFF CODE	QTY PER ASSY
02- -1	145T6060-1		MECHANISM INSTL-OVERWING ESCAPE HATCH (OPT ITEM 1A)	A-D	RF
-1A	145T6060-7		MECHANISM INSTL-OVERWING ESCAPE HATCH (OPT ITEM 1)	A-D	RF
-1B	145T6060-5		MECHANISM INSTL-OVERWING ESCAPE HATCH	A-H	RF
-1C	145T6060-11		MECHANISM INSTL-OVERWING ESCAPE HATCH (OPT ITEM 1D)	E-H	RF
-1D	145T6060-7		MECHANISM INSTL-OVERWING ESCAPE HATCH (OPT ITEM 1C)	E-H	RF
R -1E	145T6060-13		MECHANISM INSTL-OVERWING ESCAPE HATCH	J-P	RF
R -1F	145T6060-15		MECHANISM INSTL-OVERWING ESCAPE HATCH	J-P	RF
R 5 7	BACB30PW5P8 MS24665-153		DELETED .PIN-COTTER (USED ON ITEMS 1, 1A, 1B, 1C, 1D)	A-H	4
10 12	AN960XC416L BACB30MY6K		DELETED .BOLT- (SIZE DETERMINE ON INST) (USED ON ITEMS 1, 1A 1C, 1D)	A-H	4
R -12J	HL10VAZ5-5		.BOLT- (V56878) (SPEC BACB30MY5K5) (OPT B30MY5K5 (V97928)) (OPT HL10VAZ5-5 (V73197)) (OPT HL10VAZ5-5 (V92215)) (OPT HL10VAZ5-5 (V97928)) (OPT L8005K5 (V06725)) (OPT HL10VAZ5-5 (V08524)) (USED ON ITEMS 1B, 1F)		4

52-21-11

 ILLUSTRATED PARTS LIST  
 01.1 Page 1035  
 Oct 10/86

FIG. & ITEM	PART NO.	AIRLINE PART NUMBER	NOMENCLATURE 1234567	EFF CODE	QTY PER ASSY
R 02-12K	HL10VAZ6-8		.BOLT- (V56878) (SPEC BACB30MY6K8) (OPT B30MY6K8 (V97928)) (OPT HL10VAZ6-8 (V73197)) (OPT HL10VAZ6-8 (V92215)) (OPT HL10VAZ6-8 (V97928)) (OPT L8006K8 (V06725)) (OPT HL10VAZ6-8 (V08524)) (USED ON ITEM 1E)	J-P	2
R 12L	HL10VAZ6-5		.BOLT- (V56878) (SPEC BACB30MY6K5) (OPT B30MY6K5 (V97928)) (OPT HL10VAZ6-5 (V73197)) (OPT HL10VAZ6-5 (V92215)) (OPT HL10VAZ6-5 (V97928)) (OPT L8006K5 (V06725)) (OPT HL10VAZ6-5 (V08524)) (USED ON ITEM 1E)	J-P	2
R 15 16	BR1110C4M HL79-6		DELETED .COLLAR- (V56878) (SPEC BACC30M6) (OPT HL79-6 (V73197)) (OPT HL79-6 (V92215)) (OPT 66014-6 (V56878)) (USED ON ITEMS 1, 1A, 1C, 1D, 1E)		4

52-21-11

ILLUSTRATED PARTS LIST

01.1

Page 1036

Oct 10/86


**BOEING**  
 COMPONENT  
 MAINTENANCE MANUAL

FIG. & ITEM	PART NO.	AIRLINE PART NUMBER	NOMENCLATURE 1234567	EFF CODE	QTY PER ASSY
R 02- -16J	HL70-5		.COLLAR- (V56878) (SPEC BACC30M5) (OPT HL70-5 (V73197)) (OPT HL70-5 (V92215)) (OPT 66014-5 (V56878)) (USED ON ITEMS 1B, 1F)		4
17	145T6060-9		DELETED		
19	BACS40R18F71F		DELETED		
20	145T6012-1		DELETED		
20A	145T6012-2		DELETED		
R 21	145T6040-3		.FITTING ASSY-SPRT (USED ON ITEMS 1, 1A, 1C, 1D, 1E)		1
22	BACR15BA4AD		DELETED		
R 23	BACB28X3M013		..BUSHING		4
25	MS20392-3C123		DELETED		
R 27	145T6040-4		..FITTING-SPRT		1
30	MS24665-132		DELETED		
R 31	BACS40R8B26F		.SHIM-LAMINATED (USED ON ITEMS 1, 1A, 1C, 1D, 1E)		2
32	AN960-416L		DELETED		

52-21-11

ILLUSTRATED PARTS LIST

01.1

Page 1037

Oct 10/86

FIG. & ITEM	PART NO.	AIRLINE PART NUMBER	NOMENCLATURE 1234567	EFF CODE	QTY PER ASSY
02-33	BACB30LJ4U8		.BOLT- (V06710) (SPEC BACB30LJ4U8) (OPT BACB30LJ4U8 (V06725)) (OPT BACB30LJ4U8 (V06950)) (OPT BACB30LJ4U8 (V08524)) (OPT BACB30LJ4U8 (V17943)) (OPT BACB30LJ4U8 (V80539)) (OPT BACB30LJ4U8 (V27624)) (OPT BACB30LJ4U8 (V92215)) (OPT BACB30LJ4U8 (V97928)) (USED ON ITEMS 1, 1C)	A-H	1
35	145T6053-1		DELETED		
35A	145T6053-2		DELETED		
36	MS24665-153		.PIN-COTTER (USED ON ITEMS 1A, 1B, 1D)	A-H	1
38	AN960XC416L		.WASHER- (USED ON ITEMS 1, 1C)	A-H	2
40	145T6042-1		DELETED		
40A	145T6042-2		DELETED		
41	MS20392-2C15		.PIN-CLEVIS (USED ON ITEMS 1A, 1B, 1D)	A-H	1

# 52-21-11

ILLUSTRATED PARTS LIST

01.1

Page 1038

Oct 10/86




**BOEING**  
 COMPONENT  
 MAINTENANCE MANUAL

FIG. & ITEM	PART NO.	AIRLINE PART NUMBER	NOMENCLATURE 1234567	EFF CODE	QTY PER ASSY
02-43	BR1110C4M		.NUT- (V52828) (SPEC BACN10JC4CM) (OPT H01-4BAC (V15653)) (OPT NS202101SE048 (V80539)) (OPT T6C428JM (V11815)) (OPT VN303D048 (V92215)) (OPT 109LH9075-4W (V72962)) (OPT 97E48 (V80539)) (USED ON ITEMS 1, 1C)	A-H	1
45	145T6043-1		DELETED		
46	AN960C10L		.WASHER- (USED ON ITEMS 1A, 1B, 1D)	A-H	1
50	BACR15BB4		DELETED		
50A	BACR15BA3AD		DELETED		
50B	BACR15BA4AD		DELETED		
51	BACB28AK04-044		.BUSHING- (V23294) (SPEC BACB28AK04-044) (OPT BACB28AK04-044 (V70265)) (OPT BACB28AK04-044 (V94892)) (USED ON ITEMS 1, 1C)	A-H	1
55	145T6049-1		DELETED		
56	145T6032-1		.PIN-DISARM (USED ON ITEMS 1, 1C)	A-H	1
60	145T6013-1		DELETED		
60A	145T6013-2		DELETED		

52-21-11

 ILLUSTRATED PARTS LIST  
 01.1 Page 1039  
 Oct 10/86

FIG. & ITEM	PART NO.	AIRLINE PART NUMBER	NOMENCLATURE 1234567	EFF CODE	QTY PER ASSY
02-61	145T6032-2		.PIN-DISARM (USED ON ITEMS 1A, 1B, 1D)	A-H	1
R 65	MS24665-153		DELETED		
R 65A	BACS40R18F71F		.SHIM- (USED ON ITEMS 1, 1A, 1C, 1D, 1E)		1
R 66	145T6045-6		.SUPPORT-BRG (USED ON ITEMS 1, 1A, 1C, 1D)	A-H	1
-66A	145T6045-8		.SUPPORT-BRG (USED ON ITEM 1B)	A-H	1
R 67	145T6045-13		.SUPPORT ASSY- (USED ON ITEM 1E)	J-P	1
-67A	145T6045-10		.SUPPORT ASSY- (USED ON ITEM 1F)	J-P	1
R 68	BACB28AR12A064A		..BUSHING- (V09455) (SPEC BACB28AR12A064A) (OPT BACB28AR12A064A (V15860)) (OPT BACB28AR12A064A (V50294)) (OPT BACB28AR12A064A (V73134)) (OPT BACB28AR12A064A (V77896)) (OPT BACB28AR12A064A (V97613))	J-P	1
R 69	145T6045-6		..SUPPORT- (USED ON ITEM 67)	J-P	1
R -69A	145T6045-8		..SUPPORT- (USED ON ITEM 67A)	J-P	1
70	BACB30LK3DU8		DELETED		
71	BACB30MY5K		.BOLT- (SIZE DETERMINE ON INST) (USED ON ITEMS 1, 1A, 1C 1D)	A-H	2

52-21-11

 ILLUSTRATED PARTS LIST  
 01.1 Page 1040  
 Oct 10/86


**BOEING**  
 COMPONENT  
 MAINTENANCE MANUAL

FIG. & ITEM	PART NO.	AIRLINE PART NUMBER	NOMENCLATURE 1234567	EFF CODE	QTY PER ASSY
R 02-71A	HL10VAZ5-5		.BOLT- (V56878) (SPEC BACB30MY5K5) (OPT B30MY5K5 (V97928)) (OPT HL10VAZ5-5 (V73197)) (OPT HL10VAZ5-5 (V92215)) (OPT HL10VAZ5-5 (V97928)) (OPT L8005K5 (V06725)) (OPT HL10VAZ5-5 (V08524)) (USED ON ITEMS 1B, 1E, 1F)		2
R 75	AN960PD10L		DELETED		
R 76	HL70-5		.COLLAR- (V56878) (SPEC BACC30M5) (OPT HL70-5 (V73197)) (OPT HL70-5 (V92215)) (OPT 66014-5 (V56878))		2
77	AN960PD10		DELETED		
80	BACN10JD3ASU		DELETED		
81	AN960-516		DELETED		
85	145T6037-1		DELETED		
86	BACN10JD105		DELETED		
90	145T6033-1		DELETED		
91	145T6060-6		.TUBE ASSY-TORQUE (USED ON ITEM 1)	A-D	1
-91A	145T6060-8		.TUBE ASSY-TORQUE (USED ON ITEMS 1A, 1B, 1D)	A-H	1
-91C	145T6060-12		.TUBE ASSY-TORQUE (USED ON ITEM 1C)	E-H	1
92	145T6034-1		DELETED		
95	HL10VAZ6-8		DELETED		
95A	BACB30MY6K		DELETED		
95J	HL10VAZ5-5		DELETED		
96	HL79-6		DELETED		

52-21-11

ILLUSTRATED PARTS LIST

01.1

Page 1041

Oct 10/86

FIG. & ITEM	PART NO.	AIRLINE PART NUMBER	NOMENCLATURE 1234567	EFF CODE	QTY PER ASSY
02- 96J 97 -98 100 101	HL70-5 BACS40R18F71F 145T6060-8 145T6040-3 BACB30LT4U14		DELETED DELETED DELETED DELETED ..BOLT- (V06710) (SPEC BACB30LT4U14) (OPT BACB30LT4U14 (V06725)) (OPT BACB30LT4U14 (V17943)) (OPT BACB30LT4U14 (V27624)) (OPT BACB30LT4U14 (V80539)) (OPT BACB30LT4U14 (V92215)) (OPT BACB30LT4U14 (V93907)) (OPT BACB30LT4U14 (V97928))	A-H	8
105 105A 106 110 111	BACB28X3M100 BACB28X3M013 AN960XC416L 145T6040-4 BR1110C4M		DELETED DELETED ..WASHER DELETED ..NUT- (V52828) (SPEC BACN10JC4CM) (OPT H01-4BAC (V15653)) (OPT NS202101SE048 (V80539)) (OPT T6C428JM (V11815)) (OPT VN303D048 (V92215)) (OPT 109LH9075-4W (V72962)) (OPT 97E48 (V80539))	A-H A-H	8 8

# 52-21-11

 ILLUSTRATED PARTS LIST  
 01.1 Page 1042  
 Oct 10/86


**BOEING**  
 COMPONENT  
 MAINTENANCE MANUAL

FIG. & ITEM	PART NO.	AIRLINE PART NUMBER	NOMENCLATURE 1234567	EFF CODE	QTY PER ASSY
02-					
115	BACS40R8B26F		DELETED		
116	145T6010-7		..BELLCRANK-(MATCHED SET)	A-H	1
120	BACB30LJ4U8		DELETED		
122	MS24665-153		DELETED		
123	145T6010-8		..BELLCRANK-(MATCHED SET)	A-H	1
125	AN960XC416L		DELETED		
127	MS20392-2C15		DELETED		
128	145T6066-1		..SLEEVE-(MATCHED SET)	A-H	2
130	BR1110C4M		DELETED		
132	AN960C10L		DELETED		
133	BACB30LK04-22		..BOLT- (USED ON ITEM 91)	A-D	1
135	BACB28AK04-44		DELETED		
135A	BACB28AK04-044		DELETED		
137	145T6046-2		DELETED		
138	AN960XC4L		..WASHER- (USED ON ITEM 91)	A-D	1
140	145T6032-1		DELETED		
-140A	145T6032-1		DELETED		
-140B	145T6032-2		DELETED		
141	BR1110C04M		..NUT- (V52828) (SPEC BACN10JC04CM) (OPT H01-04BAC (V15653)) (OPT NS202101SE40 (V80539)) (OPT T6C440JM (V11815)) (OPT VN303D40 (V92215)) (OPT 109LH9075-40W (V72962)) (OPT 97E40 (V80539)) (USED ON ITEM 91)	A-D	1

52-21-11

 ILLUSTRATED PARTS LIST  
 01.1 Page 1043  
 Oct 10/86

FIG. & ITEM	PART NO.	AIRLINE PART NUMBER	NOMENCLATURE 1234567	EFF CODE	QTY PER ASSY
02-					
145	BACB30LK3U15		DELETED		
146	145T6047-4		..ARM ASSY-DISARM HANDLE INTR (MATCHED SET) (USED ON ITEM 91)	A-D	1
150	AN960XC10L		DELETED		
151	145T6071-1		...SPRING	A-D	2
155	BR1110C3M		DELETED		
156	MS20615M3		DELETED		
156A	MS20615-3M		...RIVET- (SIZE DETERMINE ON INST)	A-D	2
160	BACB28X12M075		DELETED		
-160A	BACB28AR12A064A		DELETED		
161	145T6047-5		...ARM	A-D	1
165	145T6031-1		..TUBE-(MATCHED SET)	A-H	1
170	145T6045-2		DELETED		
170A	145T6045-6		DELETED		
-170B	145T6045-8		DELETED		
171	145T6044-3		..BELLCRANK ASSY-DISARM (MATCHED SET) (USED ON ITEMS 91, 91C)	A-H	1
-171A	145T6044-5		..BELLCRANK ASSY-DISARM (MATCHED SET) (USED ON ITEM 91A)	A-H	1
175	BACB28AR12A064A		DELETED		
176	NAS516-1A		...FITTING	A-H	1
180	BACB30LK3U16		DELETED		
181	145T6044-4		...BELLCRANK- (USED ON ITEM 171)	A-H	1
-181A	145T6044-6		...BELLCRANK- (USED ON ITEM 171A)	A-H	1

52-21-11

ILLUSTRATED PARTS LIST

01.1

Page 1044

Oct 10/86


**BOEING**  
 COMPONENT  
 MAINTENANCE MANUAL

FIG. & ITEM	PART NO.	AIRLINE PART NUMBER	NOMENCLATURE 1234567	EFF CODE	QTY PER ASSY
02- 185 186	AN960XC10L 145T6045-5		DELETED .SUPPORT-BRG (USED ON ITEMS 1, 1A, 1C, 1D)	A-D	1
-186A	145T6045-7		.SUPPORT-BRG (USED ON ITEM 1B)	A-D	1
R 187	145T6045-14		.SUPPORT ASSY- (USED ON ITEM 1E)	J-P	1
R -187A	145T6045-11		.SUPPORT ASSY- (USED ON ITEM 1F)	J-P	1
R 188	BACB28AR12A064A		..BUSHING- (V09455) (SPEC BACB28AR12A064A) (OPT BACB28AR12A064A (V15860)) (OPT BACB28AR12A064A (V50294)) (OPT BACB28AR12A064A (V73134)) (OPT BACB28AR12A064A (V77896)) (OPT BACB28AR12A064A (V97613))	J-P	1
R 189	145T6045-12		..SUPPORT- (USED ON ITEM 187)	J-P	1
R -189A	145T6045-9		..SUPPORT- (USED ON ITEM 187A)	J-P	1
190 -191	BR1110C3M 145T6060-7001		DELETED .COLLECTOR-COMMON POINT (USED ON ITEMS 1, 1A, 1B, 1C, 1D)	A-H	1
R -191A	145T6060-7002		.COLLECTOR-COMMON POINT (USED ON ITEMS 1E, 1F)	J-P	1
R 193	MS24665-153		..PIN-COTTER (USED ON ITEM 191A)	J-P	4
195 195A 195B	145T6036-1 145T6036-3 145T6036-5		DELETED DELETED DELETED		

52-21-11

 ILLUSTRATED PARTS LIST  
 01.1 Page 1045  
 Oct 10/86

FIG. & ITEM	PART NO.	AIRLINE PART NUMBER	NOMENCLATURE 1234567	EFF CODE	QTY PER ASSY
R 02-196	BACB30PW5P8		..BOLT- (V06710) (SPEC BACB30PW5P8) (OPT BACB30PW5P8 (V06725)) (OPT BACB30PW5P8 (V06950)) (OPT BACB30PW5P8 (V08524)) (OPT BACB30PW5P8 (V17943)) (OPT BACB30PW5P8 (V27624)) (OPT BACB30PW5P8 (V80539)) (OPT BACB30PW5P8 (V92215)) (OPT BACB30PW5P8 (V97928))		2
R 200	BACB28X3M010		DELETED		
R 201	AN960XC416L		..WASHER		2
205	145T6036-2		DELETED		
205A	145T6036-4		DELETED		
205B	145T6036-6		DELETED		
R 206	BR1110C4M		..NUT- (V52828) (SPEC BACN10JC4CM) (OPT H01-4BAC (V15653)) (OPT NS202101SE048 (V80539)) (OPT T6C428JM (V11815)) (OPT VN303D048 (V92215)) (OPT 109LH9075-4W (V72962)) (OPT 97E48 (V80539))		2
210	MS24665-134		DELETED		
211	145T6060-9		..SHIM	A-H	AR
215	HRS3CFR11		DELETED		
R 216	145T6012-2		..DOOR ASSY-DISARM		1
220	HL10VAZ6-5		DELETED		

52-21-11

ILLUSTRATED PARTS LIST

01.1

Page 1046

Oct 10/86




**BOEING**  
 COMPONENT  
 MAINTENANCE MANUAL

FIG. & ITEM	PART NO.	AIRLINE PART NUMBER	NOMENCLATURE 1234567	EFF CODE	QTY PER ASSY
02-					
220A	BACB30MY5K		DELETED		
221	BACR15BA4AD		...RIVET- (SIZE DETERMINE ON INST)		14
225	HL79-6		DELETED		
225A	HL70-5		DELETED		
226	145T6012-3		...PIN		1
230	AN960516L		DELETED		
230A	AN960-516		DELETED		
231	MS24665-132		...PIN-COTTER		1
235	BACN10JD105		DELETED		
236	AN960-416L		...WASHER		1
240	145T6060-3		DELETED		
240A	145T6060-6		DELETED		
-240B	145T6060-8		DELETED		
241	145T6053-2		...SPRING-DBL TORSION		1
245	BACB30LT4U14		DELETED		
246	145T6042-2		...HANDLE-DISARM OUTSIDE		1
250	AN960XC416L		DELETED		
251	145T6043-1		...SEAL		1
255	BR1110C4M		DELETED		
256	145T6049-1		...RETAINER-SEAL		1
260	145T6010-3		DELETED		
260A	145T6010-7		DELETED		
261	145T6013-2		...DOOR-DISARM		1
265	145T6010-4		DELETED		
265A	145T6010-8		DELETED		
R 266	BACB30LK3DU8		..BOLT- (V06710) (SPEC BACB30LK3DU8) (OPT BACB30LK3DU8 (V06725)) (OPT BACB30LK3DU8 (V06950)) (OPT BACB30LK3DU8 (V08524)) (OPT BACB30LK3DU8 (V17943)) (OPT BACB30LK3DU8 (V27624)) (OPT BACB30LK3DU8 (V80539)) (OPT BACB30LK3DU8 (V92215)) (OPT BACB30LK3DU8 (V97928))		4

52-21-11

 ILLUSTRATED PARTS LIST  
 01.1 Page 1047  
 Oct 10/86

FIG. & ITEM	PART NO.	AIRLINE PART NUMBER	NOMENCLATURE 1234567	EFF CODE	QTY PER ASSY
02-					
R 270	145T6066-1		DELETED		
R 271	AN960PD10		..WASHER		4
275	BACB30LK0422		DELETED		
R 275A	BACB30LK04-22		DELETED		
R 276	BACN10JD3ASU		..NUT- (V15653) (SPEC BACN10JD3ASU) (OPT BACN10JD3ASU (V56878)) (OPT BACN10JD3ASU (V72962)) (OPT BACN10JD3ASU (V92595))		4
R 280	AN960XC4L		DELETED		
R 281	145T6037-1		..SPRING		2
285	BR1110C04M		DELETED		
R 286	145T6033-1		..SLEEVE		2
290	145T6047-1		DELETED		
R 290A	145T6047-4		DELETED		
R 291	145T6034-1		..SLEEVE		2
295	145T6071-1		DELETED		
R 296	145T6046-2		..FITTING		1
300	MS20615M3		DELETED		
02-					
301	BACB30LK3U15		..BOLT- (V06710) (SPEC BACB30LK3U15) (OPT BACB30LK3U15 (V06725)) (OPT BACB30LK3U15 (V06950)) (OPT BACB30LK3U15 (V08524)) (OPT BACB30LK3U15 (V17943)) (OPT BACB30LK3U15 (V27624)) (OPT BACB30LK3U15 (V80539)) (OPT BACB30LK3U15 (V92215)) (OPT BACB30LK3U15 (V97928))	A-H	1

52-21-11

ILLUSTRATED PARTS LIST

01.1

Page 1048

Oct 10/86


**BOEING**  
 COMPONENT  
 MAINTENANCE MANUAL

FIG. & ITEM	PART NO.	AIRLINE PART NUMBER	NOMENCLATURE 1234567	EFF CODE	QTY PER ASSY
02-					
305	145T6047-2		DELETED		
305A	145T6047-5		DELETED		
306	AN960XC10L		..WASHER	A-H	1
310	145T6031-1		DELETED		
311	BR1110C3M		..NUT- (V52828) (SPEC BACN10JC3CM) (OPT H01-3BAC (V15653)) (OPT NS202101SE02 (V80539)) (OPT T6C1032JM (V11815)) (OPT VN303D02 (V92215)) (OPT 109LH9075-3W (V72962)) (OPT 97E02 (V80539))	A-H	1
315	145T6044-3		DELETED		
316	BACB28X12M075		..BUSHING- (V23294) (SPEC BACB28X12M075) (OPT BACB28X12M075 (V70265)) (OPT BACB28X12M075 (V94892))	A-H	1
-316A	BACB28AR12A064A		DELETED		
-317	145T6044-5		DELETED		
320	NAS516-1A		DELETED		
321	BACB28AR12A064A		..BUSHING- (V09455) (SPEC BACB28AR12A064A) (OPT BACB28AR12A064A (V15860)) (OPT BACB28AR12A064A (V50294)) (OPT BACB28AR12A064A (V73134)) (OPT BACB28AR12A064A (V77896)) (OPT BACB28AR12A064A (V97613))	A-H	1

52-21-11

ILLUSTRATED PARTS LIST

01.1

Page 1049

Oct 10/86

FIG. & ITEM	PART NO.	AIRLINE PART NUMBER	NOMENCLATURE 1234567	EFF CODE	QTY PER ASSY
R 02-325	145T6044-4		DELETED		
R 326	BACB30LK3U16		..BOLT- (V06710) (SPEC BACB30LK3U16) (OPT BACB30LK3U16 (V06725)) (OPT BACB30LK3U16 (V06950)) (OPT BACB30LK3U16 (V08524)) (OPT BACB30LK3U16 (V17943)) (OPT BACB30LK3U16 (V27624)) (OPT BACB30LK3U16 (V80539)) (OPT BACB30LK3U16 (V92215)) (OPT BACB30LK3U16 (V97928))		2
-327	145T6044-6		DELETED		
330	145T6045-1		DELETED		
330A	145T6045-5		DELETED		
-330B	145T6045-7		DELETED		
R 331	AN960XC10L		..WASHER		2
335	BACB28AR18A064A		DELETED		
335A	BACB28AR18A058A		DELETED		
R 336	BR1110C3M		..NUT- (V52828) (SPEC BACN10JC3CM) (OPT H01-3BAC (V15653)) (OPT NS202101SE02 (V80539)) (OPT T6C1032JM (V11815)) (OPT VN303D02 (V92215)) (OPT 109LH9075-3W (V72962)) (OPT 97E02 (V80539))		2

52-21-11

ILLUSTRATED PARTS LIST

01.1

Page 1050

Oct 10/86


**BOEING**  
 COMPONENT  
 MAINTENANCE MANUAL

FIG. & ITEM	PART NO.	AIRLINE PART NUMBER	NOMENCLATURE 1234567	EFF CODE	QTY PER ASSY
02-					
	340	63123K31	DELETED		
	341	145T6036-5	..ARM ASSY-FOLLOWER HANDLE	A-H	1
R	-341A	145T6093-1	..ARM ASSY-FOLLOWER HANDLE	J-P	1
	345	WJ121616	DELETED		
R	346	BACB28X3M010	...BUSHING- (V23294) (SPEC BACB28X3M010) (OPT BACB28X3M010 (V70265)) (OPT BACB28X3M010 (V94892))		2
	350	JT1813	DELETED		
	351	145T6036-6	...ARM	A-H	1
R	-351A	145T6093-2	...ARM	J-P	1
	355	145T6035-1	DELETED		
R	356	MS24665-134	..PIN-COTTER		2
	360	145T6058-1	DELETED		
R	360A	AN960-516	..WASHER		2
R	360B	BACN10JD105	..NUT- (V15653) (SPEC BACN10JD105) (OPT BACN10JD105 (V56878)) (OPT BACN10JD105 (V72962)) (OPT BACN10JD105 (V92595))		2
R	361	BACB10AF5F11HS	..CAM FOLLOWER		2
	366	BACB28AR18A058A	..BUSHING	A-H	1
	371	63123K31	..SEAL- (V79150)	A-H	2
	376	WJ121616	..SEAL- (V60380)	A-H	2
	381	JT1813	..BEARING- (V60380)	A-H	2
	386	145T6035-1	..ARM-FOLLOWER	A-H	1
R	-386A	145T6094-1	..ARM-FOLLOWER	J-P	1
	391	145T6058-1	..SPACER-TORQUE TUBE	A-H	1
R	395	MS24665-153	..PIN-COTTER	J-P	1
R	400	MS20392-2C15	..PIN-CLEVIS	J-P	1
R	405	AN960C10L	..WASHER	J-P	1
R	410	145T6032-2	..PIN-DISARM	J-P	1
R	411	145T6092-1	DELETED		
	411A	145T6092-4	..BELLCRANK ASSY	J-P	1

52-21-11

ILLUSTRATED PARTS LIST

01.1

Page 1051

Jul 01/90

FIG. & ITEM	PART NO.	AIRLINE PART NUMBER	NOMENCLATURE 1234567	EFF CODE	QTY PER ASSY
	02-				
R	412	NAS516-1A	...FITTING-LUBE	J-P	1
R	413	JT1211	...BEARING- (V60380)	J-P	2
R	414	145T6092-2	DELETED		
	414A	145T6092-5	...BELLCRANK	J-P	1
R	415	BACB30LT4U14	..BOLT- (V06710) (SPEC BACB30LT4U14) (OPT BACB30LT4U14 (V06725)) (OPT BACB30LT4U14 (V17943)) (OPT BACB30LT4U14 (V27624)) (OPT BACB30LT4U14 (V80539)) (OPT BACB30LT4U14 (V92215)) (OPT BACB30LT4U14 (V93907)) (OPT BACB30LT4U14 (V97928))	J-P	8
R	420	AN960XC416L	..WASHER	J-P	8
R	425	BR1110C4M	..NUT- (V52828) (SPEC BACN10JC4CM) (OPT H01-4BAC (V15653)) (OPT NS202101SE048 (V80539)) (OPT T6C428JM (V11815)) (OPT VN303D048 (V92215)) (OPT 109LH9075-4W (V72962)) (OPT 97E48 (V80539))	J-P	8

52-21-11

 ILLUSTRATED PARTS LIST  
 01.1 Page 1052  
 Jul 01/90


**BOEING**  
 COMPONENT  
 MAINTENANCE MANUAL

FIG. & ITEM	PART NO.	AIRLINE PART NUMBER	NOMENCLATURE 1234567	EFF CODE	QTY PER ASSY
02-					
R 430	145T6010-7		..BELLCRANK-(MATCHED SET)	J-P	1
R 435	145T6010-8		..BELLCRANK-(MATCHED SET)	J-P	1
R 440	145T6066-1		..SLEEVE-(MATCHED SET)	J-P	2
R 445	145T6031-1		..TUBE-(MATCHED SET)	J-P	1

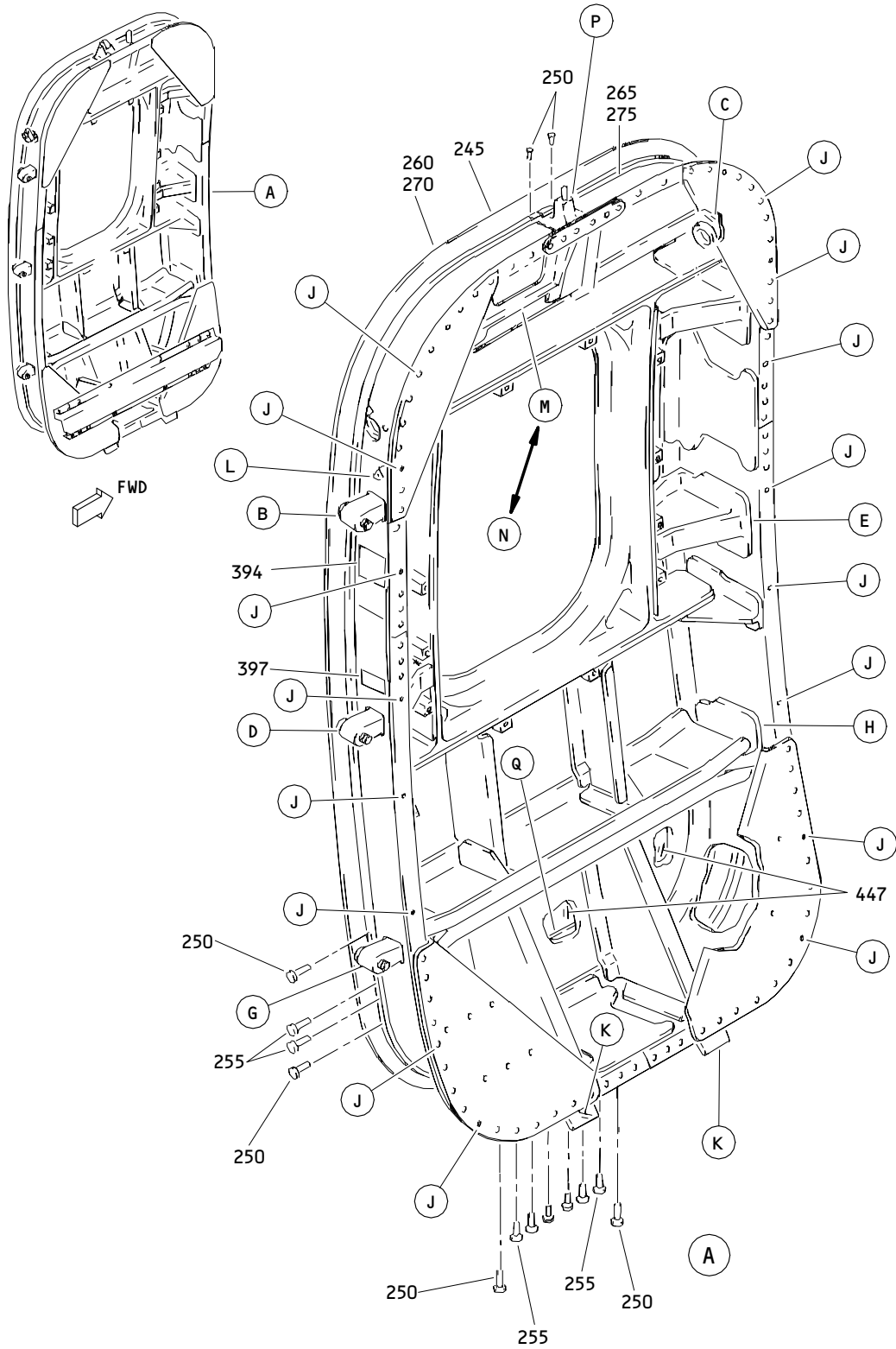
# 52-21-11

ILLUSTRATED PARTS LIST

01.1

Page 1053

Oct 10/86



Hatch Assembly  
Figure 3 (Sheet 1)

**52-21-11**

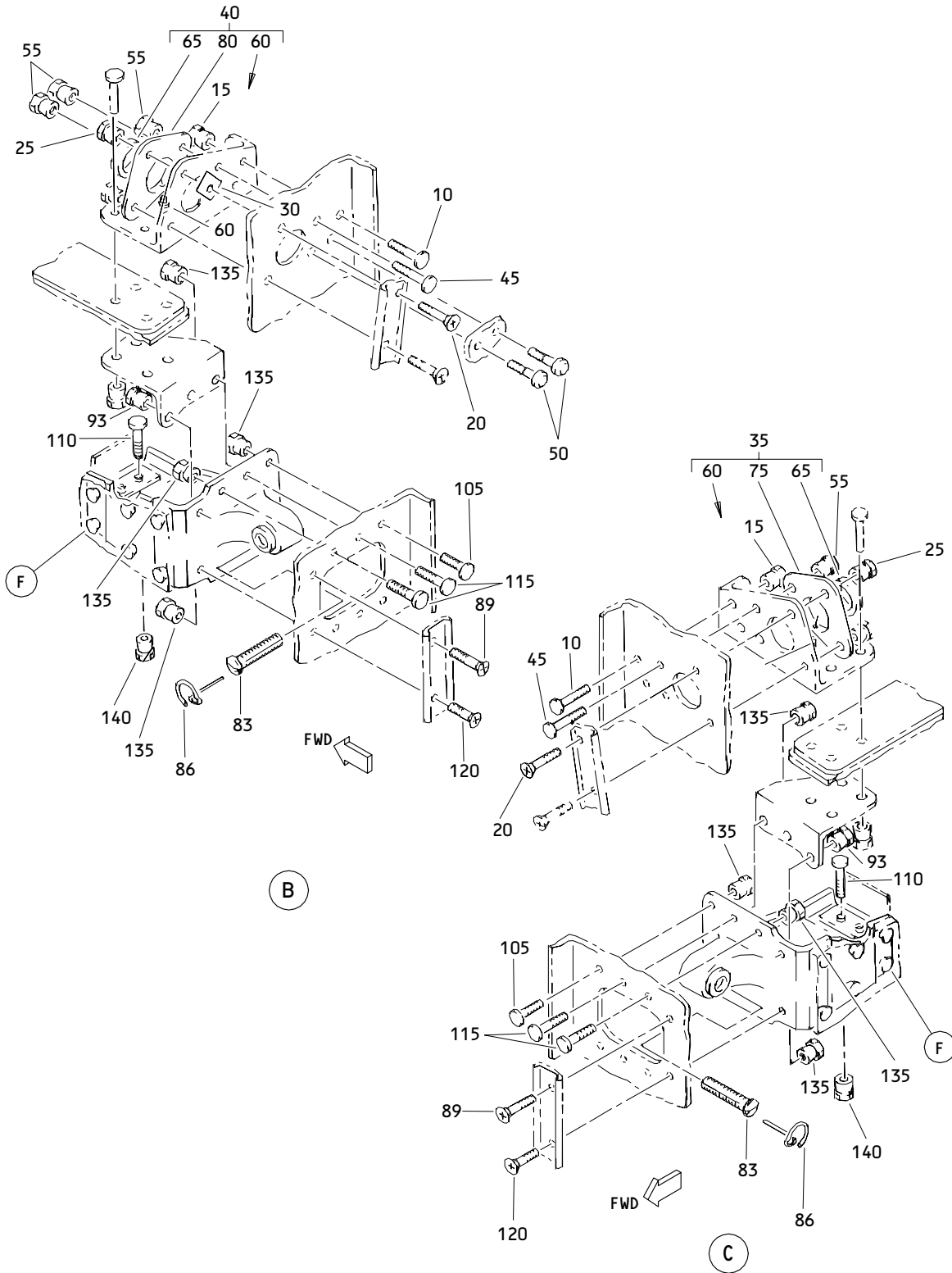
ILLUSTRATED PARTS LIST

01.1

Page 1055

Jul 10/84

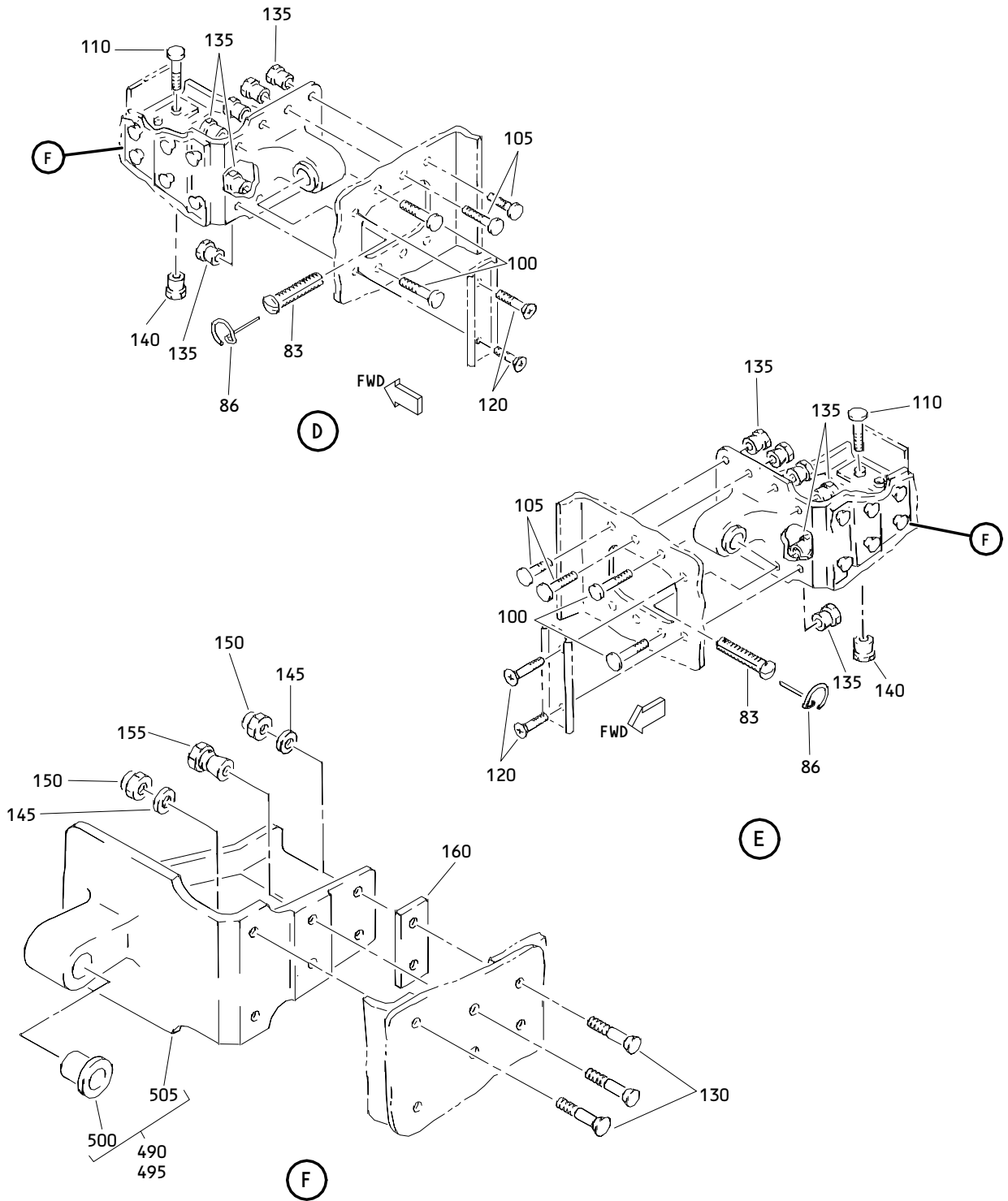




Hatch Assembly  
 Figure 3 (Sheet 2)

**52-21-11**

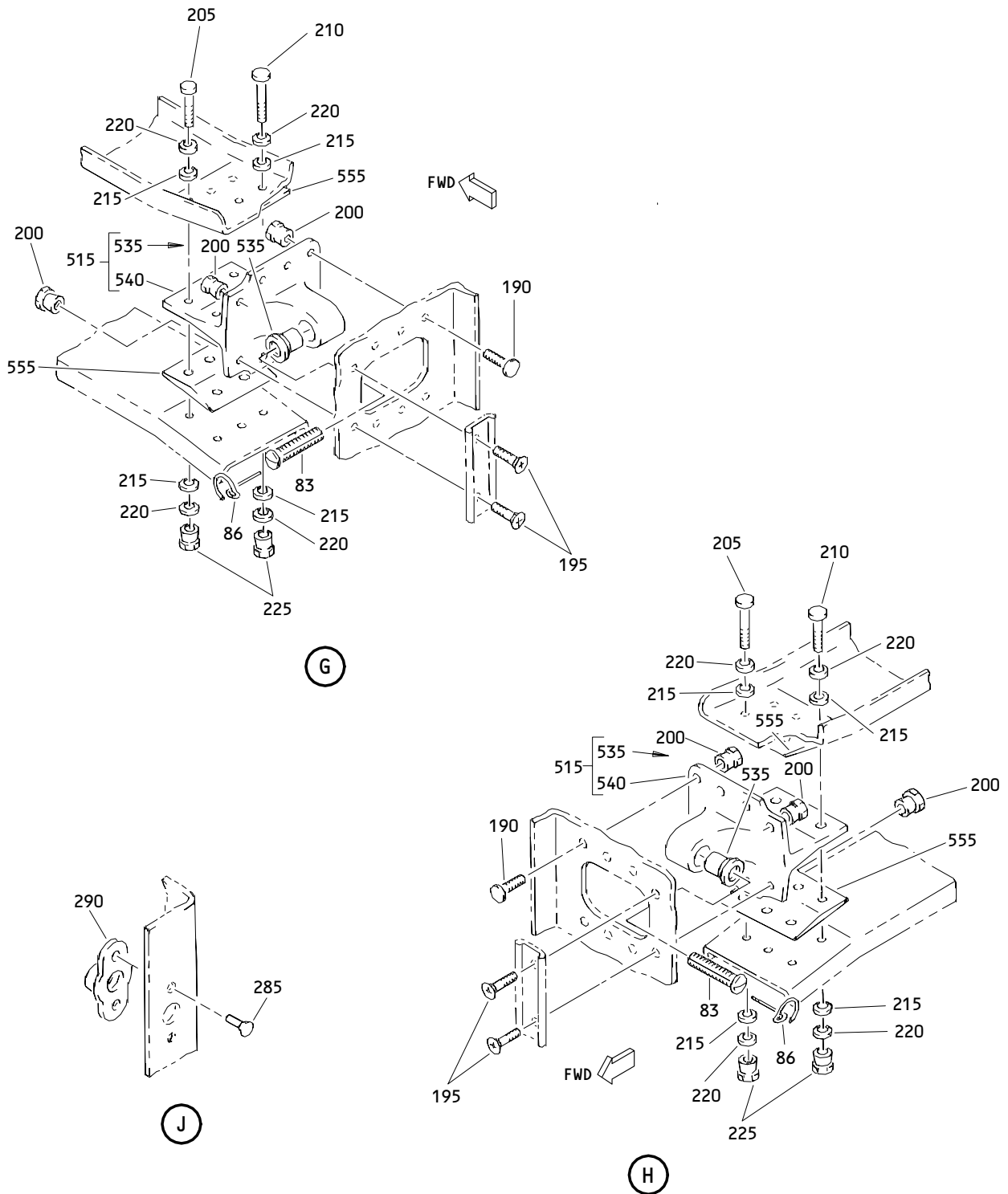
ILLUSTRATED PARTS LIST  
 01.1 Page 1056  
 Oct 10/84



Hatch Assembly  
 Figure 3 (Sheet 3)

**52-21-11**

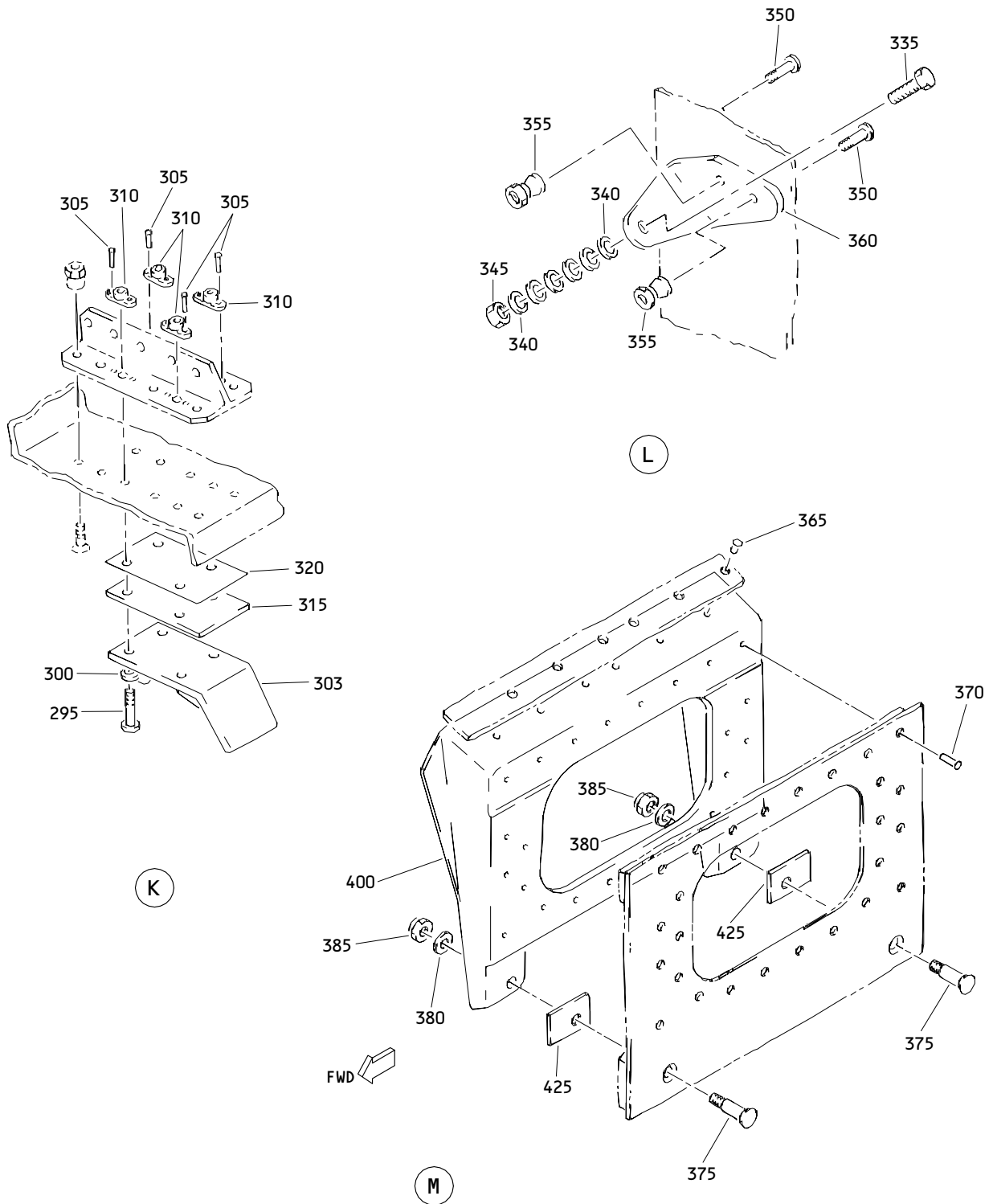
ILLUSTRATED PARTS LIST  
 01.1 Page 1057  
 Oct 10/86



Hatch Assembly  
 Figure 3 (Sheet 4)

**52-21-11**

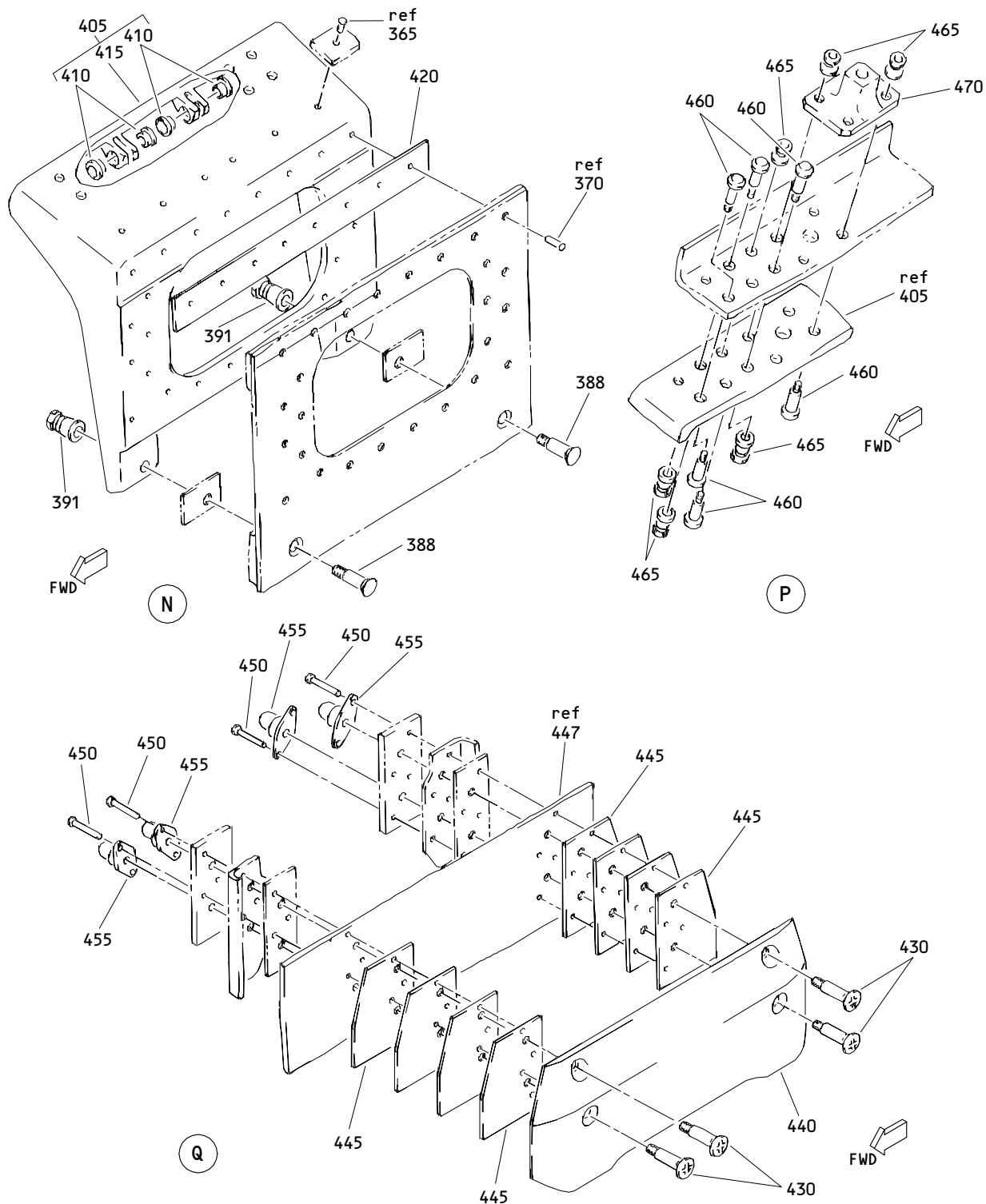
ILLUSTRATED PARTS LIST  
 01.1 Page 1058  
 Oct 10/86



Hatch Assembly  
 Figure 3 (Sheet 5)

**52-21-11**

ILLUSTRATED PARTS LIST  
 01.1 Page 1059  
 Jul 10/84



Hatch Assembly  
 Figure 3 (Sheet 6)

**52-21-11**

ILLUSTRATED PARTS LIST  
 01.101 Page 1060  
 Oct 10/84


**BOEING**  
 COMPONENT  
 MAINTENANCE MANUAL

FIG. & ITEM	PART NO.	AIRLINE PART NUMBER	NOMENCLATURE 1234567	EFF CODE	QTY PER ASSY
03- -1	145T6016-3		HATCH ASSY- (OPT ITEM 1A)	A,B	RF
-1A	145T6016-37		HATCH ASSY- (OPT ITEM 1)	A,B	RF
-1B	145T6016-37		HATCH ASSY- (OPT ITEM 1C)	E,G	RF
-1C	145T6016-45		HATCH ASSY- (OPT ITEM 1B)	E,G	RF
-1D	145T6016-103		HATCH ASSY- (OPT ITEM 1E)	C,D	RF
-1E	145T6016-38		HATCH ASSY- (OPT ITEM 1D)	C,D	RF
-1F	145T6016-38		HATCH ASSY- (OPT ITEM 1G)	F,H	RF
-1G	145T6016-47		HATCH ASSY- (OPT ITEM 1F)	F,H	RF
-1H	145T6016-104		HATCH ASSY- (OPT ITEM 1J)	J,L	RF
-1J	145T6016-110		HATCH ASSY- (OPT ITEM 1H)	J,L	RF
-1K	145T6016-109		DELETED		
R -1L	145T6016-112		HATCH ASSY- (OPT ITEM 001M)	K,M	RF
R -1M	145T6016-115		HATCH ASSY- (OPT ITEM 001L)	K,M	RF
R -1N	145T6016-116		HATCH ASSY- (OPT ITEM 001P)	N,P	RF
R -1P	145T6016-119		HATCH ASSY- (OPT ITEM 001N)	N,P	RF
R -5	145T6016-7001		. COLLECTOR-COMMON POINT		1
R 10	HL10VAZ5-6		. .BOLT- (V56878) (SPEC BACB30MY5K6) (OPT B30MY5K6 (V97928)) (OPT HL10VAZ5-6 (V73197)) (OPT HL10VAZ5-6 (V92215)) (OPT HL10VAZ5-6 (V97928)) (OPT L8005K6 (V06725)) (OPT HL10VAZ5-6 (V08524))		2

52-21-11

 ILLUSTRATED PARTS LIST  
 01.1 Page 1061  
 Oct 10/86

FIG. & ITEM	PART NO.	AIRLINE PART NUMBER	NOMENCLATURE 1234567	EFF CODE	QTY PER ASSY
R 03-15	HL82-5APBW		..COLLAR- (V73197) (SPEC BACC30AG5) (OPT HL82-5APBW (V56878))		2
R 20	HL11VAZ5-6		..BOLT- (V56878) (SPEC BACB30NW5K6) (OPT B30NW5K6 (V97928)) (OPT HL11VAZ5-6 (V73197)) (OPT HL11VAZ5-6 (V92215)) (OPT HL11VAZ5-6 (V97928)) (OPT L803-5K6 (V06725)) (OPT HL11VAZ5-6 (V08524))		2
R 25	HL82-5APBW		..COLLAR- (V73197) (SPEC BACC30AG5) (OPT HL82-5APBW (V56878))		2
R 30	BACS40R08C08F		..SHIM		1
R 35	145T6011-1		..HOUSING ASSY-BRG		1
R 40	145T6011-2		..HOUSING ASSY-BRG		1
R 45	HL10VAZ5-8		..BOLT- (V56878) (SPEC BACB30MY5K8) (OPT B30MY5K8 (V97928)) (OPT HL10VAZ5-8 (V73197)) (OPT HL10VAZ5-8 (V92215)) (OPT HL10VAZ5-8 (V97928)) (OPT L8005K8 (V06725)) (OPT HL10VAZ5-8 (V08524))		2

52-21-11

 ILLUSTRATED PARTS LIST  
 01.1 Page 1062  
 Oct 10/86


**BOEING**  
 COMPONENT  
 MAINTENANCE MANUAL

FIG. & ITEM	PART NO.	AIRLINE PART NUMBER	NOMENCLATURE 1234567	EFF CODE	QTY PER ASSY
R 03-50	HL10VAZ5-9		..BOLT- (V56878) (SPEC BACB30MY5K9) (OPT B30MY5K9 (V97928)) (OPT HL10VAZ5-9 (V73197)) (OPT HL10VAZ5-9 (V92215)) (OPT HL10VAZ5-9 (V97928)) (OPT L8005K9 (V06725)) (OPT HL10VAZ5-9 (V08524))		2
R 55	HL82-5APBW		..COLLAR- (V73197) (SPEC BACC30AG5) (OPT HL82-5APBW (V56878)) -----*		4
60	NAS516-1A		...FITTING		1
65	ABW12-101		...BEARING- (V50294) (OPT ITEM 70)		1
-70	NB12BAM2		...BEARING- (V73134) (OPT ITEM 65)		1
75	145T6011-3		...HOUSING- (USED ON ITEM 35)		1
80	145T6011-4		...HOUSING- (USED ON ITEM 40)		1
R 83	140T2639-3		..PIN-STOP		6
R 86	66-16691-2		..SPRING		6

52-21-11

ILLUSTRATED PARTS LIST

01.1

Page 1063

Oct 10/86



FIG. & ITEM	PART NO.	AIRLINE PART NUMBER	NOMENCLATURE 1234567	EFF CODE	QTY PER ASSY
R 03-89	HL10VAZ5-7		..BOLT- (V56878) (SPEC BACB30MY5K7) (OPT B30MY5K7 (V97928)) (OPT HL10VAZ5-7 (V73197)) (OPT HL10VAZ5-7 (V92215)) (OPT HL10VAZ5-7 (V97928)) (OPT L8005K7 (V06725)) (OPT HL10VAZ5-7 (V08524))		2
R 93	HL82-5APBW		..COLLAR- (V73197) (SPEC BACC30AG5) (OPT HL82-5APBW (V56878))		2
R 95 100	145T6003-1 HL10VAZ5-3		DELETED ..BOLT- (V56878) (SPEC BACB30MY5K3) (OPT B30MY5K3 (V97928)) (OPT HL10VAZ5-3 (V73197)) (OPT HL10VAZ5-3 (V92215)) (OPT HL10VAZ5-3 (V97928)) (OPT L8005K3 (V06725)) (OPT HL10VAZ5-3 (V08524))		4

52-21-11

ILLUSTRATED PARTS LIST

01.1

Page 1064

Oct 10/86

**BOEING**  
 COMPONENT  
 MAINTENANCE MANUAL

FIG. & ITEM	PART NO.	AIRLINE PART NUMBER	NOMENCLATURE 1234567	EFF CODE	QTY PER ASSY
R 03-105	HL10VAZ5-4		..BOLT- (V56878) (SPEC BACB30MY5K4) (OPT B30MY5K4 (V97928)) (OPT HL10VAZ5-4 (V73197)) (OPT HL10VAZ5-4 (V92215)) (OPT HL10VAZ5-4 (V97928)) (OPT L8005K4 (V06725)) (OPT HL10VAZ5-4 (V08524))		16
R 110	HL10VAZ5-5		..BOLT- (V56878) (SPEC BACB30MY5K5) (OPT B30MY5K5 (V97928)) (OPT HL10VAZ5-5 (V73197)) (OPT HL10VAZ5-5 (V92215)) (OPT HL10VAZ5-5 (V97928)) (OPT L8005K5 (V06725)) (OPT HL10VAZ5-5 (V08524))		8

**52-21-11**

ILLUSTRATED PARTS LIST  
 01.1 Page 1065  
 Oct 10/86

FIG. & ITEM	PART NO.	AIRLINE PART NUMBER	NOMENCLATURE	EFF CODE	QTY PER ASSY
R 03-115	HL10VAZ5-6		1234567 ..BOLT- (V56878) (SPEC BACB30MY5K6) (OPT B30MY5K6 (V97928)) (OPT HL10VAZ5-6 (V73197)) (OPT HL10VAZ5-6 (V92215)) (OPT HL10VAZ5-6 (V97928)) (OPT L8005K6 (V06725)) (OPT HL10VAZ5-6 (V08524))		4
R 120	HL11VAZ5-4		..BOLT- (V56878) (SPEC BACB30NW5K4) (OPT B30NW5K4 (V97928)) (OPT HL11VAZ5-4 (V73197)) (OPT HL11VAZ5-4 (V92215)) (OPT HL11VAZ5-4 (V97928)) (OPT L803-5K4 (V06725)) (OPT HL11VAZ5-4 (V08524)) ATTACHING PARTS		6

52-21-11

ILLUSTRATED PARTS LIST

01.1

Page 1066

Oct 10/86


**BOEING**  
 COMPONENT  
 MAINTENANCE MANUAL

FIG. & ITEM	PART NO.	AIRLINE PART NUMBER	NOMENCLATURE 1234567	EFF CODE	QTY PER ASSY
R 03- 125 130	HL10VAZ5-7 HL11VAZ6-5		DELETED ..BOLT- (V56878) (SPEC BACB30NW6K5) (OPT HL11V6-5 (V92215)) (OPT HL11V6-5 (V97928)) (OPT L803-6-5 (V06725)) (OPT B30NW6K5 (V97928)) (OPT HL11VAZ6-5 (V73197)) (OPT HL11VAZ6-5 (V92215)) (OPT HL11VAZ6-5 (V97928)) (OPT L803-6K5 (V06725)) (OPT HL11V6-5 (V80539)) (OPT HL11VAZ6-5 (V08524))		24
R 135	HL82-5APBW		..COLLAR- (V73197) (SPEC BACC30AG5) (OPT HL82-5APBW (V56878))		30
R 140	HL70-5		..COLLAR- (V56878) (SPEC BACC30M5) (OPT HL70-5 (V73197)) (OPT HL70-5 (V92215)) (OPT 66014-5 (V56878))		8

52-21-11

 ILLUSTRATED PARTS LIST  
 01.1 Page 1067  
 Oct 10/86

FIG. & ITEM	PART NO.	AIRLINE PART NUMBER	NOMENCLATURE 1234567	EFF CODE	QTY PER ASSY
R 03- 145	AN960D10		..WASHER		16
R 150	H10-3BAC		..NUT- (V15653) (SPEC BACN10JC3) (OPT NS202101-02 (V80539)) (OPT RMLH9075-3W (V72962)) (OPT T6S1032J (V71087)) (OPT VN303A02 (V92215)) (OPT 96-02 (V80539)) (OPT BRH10A3 (V52828))		16
R 155	HL79-6		..COLLAR- (V56878) (SPEC BACC30M6) (OPT HL79-6 (V73197)) (OPT HL79-6 (V92215)) (OPT 66014-6 (V56878))		8
R 160	BACS40R07B17F		..SHIM		4
165	145T6019-1		DELETED		
170	145T6003-3		DELETED		
175	145T6004-1		DELETED		
180	145T6016-27		DELETED		
-185	145T6004-4		DELETED		

52-21-11

ILLUSTRATED PARTS LIST

01.1

Page 1068

Oct 10/86

**BOEING**  
 COMPONENT  
 MAINTENANCE MANUAL

FIG. & ITEM	PART NO.	AIRLINE PART NUMBER	NOMENCLATURE 1234567	EFF CODE	QTY PER ASSY
R 03-190	HL10VAZ5-5		..BOLT- (V56878) (SPEC BACB30MY5K5) (OPT B30MY5K5 (V97928)) (OPT HL10VAZ5-5 (V73197)) (OPT HL10VAZ5-5 (V92215)) (OPT HL10VAZ5-5 (V97928)) (OPT L8005K5 (V06725)) (OPT HL10VAZ5-5 (V08524))		12
R 195	HL11VAZ5-5		..BOLT- (V56878) (SPEC BACB30NW5K5) (OPT B30NW5K5 (V97928)) (OPT HL11VAZ5-5 (V73197)) (OPT HL11VAZ5-5 (V92215)) (OPT HL11VAZ5-5 (V97928)) (OPT L803-5K5 (V06725)) (OPT HL11VAZ5-5 (V08524))		4

**52-21-11**

ILLUSTRATED PARTS LIST  
 01.1 Page 1069  
 Oct 10/86

FIG. & ITEM	PART NO.	AIRLINE PART NUMBER	NOMENCLATURE 1234567	EFF CODE	QTY PER ASSY
R 03-200	HL82-5APBW		..COLLAR- (V73197) (SPEC BACC30AG5) (OPT HL82-5APBW (V56878))		16
R 205	HL12VAZ6-11		..BOLT- (V56878) (SPEC BACB30NX6K11) (OPT HL12VAZ6-11 (V73197)) (OPT HL12VAZ6-11 (V92215)) (OPT HL12VAZ6-11 (V97928)) (OPT L802-6K11 (V06725)) (OPT HL12VAZ6-11 (V08524))		6
R 210	HL12VAZ6-14		..BOLT- (V56878) (SPEC BACB30NX6K14) (OPT HL12VAZ6-14 (V73197)) (OPT HL12VAZ6-14 (V92215)) (OPT HL12VAZ6-14 (V97928)) (OPT L802-6K14 (V06725)) (OPT HL12VAZ6-14 (V08524))		6

# 52-21-11

 ILLUSTRATED PARTS LIST  
 01.1 Page 1070  
 Oct 10/86


**BOEING**  
 COMPONENT  
 MAINTENANCE MANUAL

FIG. & ITEM	PART NO.	AIRLINE PART NUMBER	NOMENCLATURE 1234567	EFF CODE	QTY PER ASSY
R 03-215	K29913-3		..WASHER- (V15653) (SPEC BACW10CA3CC) (OPT 70191-3 (V56878)) (OPT 922008-3 (V60119)) (OPT 942008-3 (V60119))		24
R 220	K29646-3		..WASHER- (V15653) (SPEC BACW10CA3CV) (OPT 70188-3 (V56878)) (OPT 922007-3 (V60119)) (OPT 942007-3 (V60119))		24
R 225	HL1187-6		..COLLAR- (V73197) (SPEC BACC30X6) (OPT HL87-6 (V73197)) (OPT HL87-6 (V92215)) (OPT HL1187-6 (V56878)) (OPT HL1187-6 (V92215)) (OPT HL87-6 (V56878))		12
230	145T6019-1		DELETED		
235	145T6004-3		DELETED		
-240	145T6004-6		DELETED		
245	SF15-120-3		DELETED		
250	BACR15BB4AD		..RIVET- (SIZE DETERMINE ON INST)		56
255	BACR15CE4D		..RIVET- (SIZE DETERMINE ON INST)		8
R 260	145T6016-5		..RETAINER-SEAL		1
R 265	145T6016-6		..RETAINER-SEAL		1
R 270	145T6016-34		..RETAINER-SEAL		1

52-21-11

ILLUSTRATED PARTS LIST

01.1

Page 1071

Oct 10/86



FIG. & ITEM	PART NO.	AIRLINE PART NUMBER	NOMENCLATURE 1234567	EFF CODE	QTY PER ASSY
R 03-275	145T6016-35		..RETAINER-SEAL		1
R 285	BACR15BA3AD		..RIVET- (SIZE DETERMINE ON INST)		32
R 290	F5000-3BAC		..NUTPLATE- (V15653) (SPEC BACN10JR3F) (OPT NS103203-02 (V80539)) (OPT RMF9201-3 (V72962)) (OPT T8091S1032 (V11815)) (OPT VN152A1-02 (V92215)) (OPT BRF200A3 (V52828))		16
R 295	BACB30NM3K7		..BOLT- (V06710) (SPEC BACB30NM3K7) (OPT BACB30NM3K7 (V06725)) (OPT BACB30NM3K7 (V06950)) (OPT BACB30NM3K7 (V08524)) (OPT BACB30NM3K7 (V27624)) (OPT BACB30NM3K7 (V56878)) (OPT BACB30NM3K7 (V73197)) (OPT BACB30NM3K7 (V80539)) (OPT BACB30NM3K7 (V92215)) (OPT BACB30NM3K7 (V93907)) (OPT BACB30NM3K7 (V97928))		8

# 52-21-11

 ILLUSTRATED PARTS LIST  
 01.1 Page 1072  
 Oct 10/86


**BOEING**  
 COMPONENT  
 MAINTENANCE MANUAL

FIG. & ITEM	PART NO.	AIRLINE PART NUMBER	NOMENCLATURE 1234567	EFF CODE	QTY PER ASSY
R	03-300	AN960PD10L	..WASHER		8
R	303	145T6063-2	..FITTING-PIVOT		2
	305	BACR15BA3AD	..RIVET- (SIZE DETERMINE ON INST)		16
R	310	T8124S3S	..NUTPLATE- (V71087) (SPEC BACN10JN3) (OPT BRFM20A3 (V52828)) (OPT MF1000-3BAC (V15653)) (OPT NS103218-02 (V80539)) (OPT RMF9201M3 (V72962)) (OPT VN252A02 (V92215))		8
R	315	145T6021-1	..PLATE-SERRATED		2
R	320	BACS40R15E30F	..SHIM		2
R	335	NAS428-3-5	..BOLT		1
R	340	AN960-10L	..WASHER		AR
R	345	H10-3BAC	..NUT- (V15653) (SPEC BACN10JC3) (OPT NS202101-02 (V80539)) (OPT RMLH9075-3W (V72962)) (OPT T6S1032J (V71087)) (OPT VN303A02 (V92215)) (OPT 96-02 (V80539)) (OPT BRH10A3 (V52828))		1

52-21-11

ILLUSTRATED PARTS LIST

01.1

Page 1073

Oct 10/86

FIG. & ITEM	PART NO.	AIRLINE PART NUMBER	NOMENCLATURE 1234567	EFF CODE	QTY PER ASSY
R 03-350	HL10VAZ5-9		..BOLT- (V56878) (SPEC BACB30MY5K9) (OPT B30MY5K9 (V97928)) (OPT HL10VAZ5-9 (V73197)) (OPT HL10VAZ5-9 (V92215)) (OPT HL10VAZ5-9 (V97928)) (OPT L8005K9 (V06725)) (OPT HL10VAZ5-9 (V08524))		2
R 355	HL82-5APBW		..COLLAR- (V73197) (SPEC BACC30AG5) (OPT HL82-5APBW (V56878))		2
R 360	145T6090-1		..BRACKET-STOP		1
365	BACR15CE6K		..RIVET- (SIZE DETERMINE ON INST)		6
370	BACR15FV6KE		..RIVET- (SIZE DETERMINE ON INST)		26

# 52-21-11

 ILLUSTRATED PARTS LIST  
 01.1 Page 1074  
 Oct 10/86


**BOEING**  
 COMPONENT  
 MAINTENANCE MANUAL

FIG. & ITEM	PART NO.	AIRLINE PART NUMBER	NOMENCLATURE 1234567	EFF CODE	QTY PER ASSY
R 03-375	HL11VAZ6-5		..BOLT- (V56878) (SPEC BACB30NW6K5) (OPT HL11V6-5 (V92215)) (OPT HL11V6-5 (V97928)) (OPT L803-6-5 (V06725)) (OPT B30NW6K5 (V97928)) (OPT HL11VAZ6-5 (V73197)) (OPT HL11VAZ6-5 (V92215)) (OPT HL11VAZ6-5 (V97928)) (OPT L803-6K5 (V06725)) (OPT HL11V6-5 (V80539)) (OPT HL11VAZ6-5 (V08524))		2
R 380	AN960D10		..WASHER		2
R 385	H10-3BAC		..NUT- (V15653) (SPEC BACN10JC3) (OPT NS202101-02 (V80539)) (OPT RMLH9075-3W (V72962)) (OPT T6S1032J (V71087)) (OPT VN303A02 (V92215)) (OPT 96-02 (V80539)) (OPT BRH10A3 (V52828))		2

52-21-11

ILLUSTRATED PARTS LIST

01.1

Page 1075

Oct 10/86

FIG. & ITEM	PART NO.	AIRLINE PART NUMBER	NOMENCLATURE 1234567	EFF CODE	QTY PER ASSY
R 03-388	HL11VAZ6-7		..BOLT- (V56878) (SPEC BACB30NW6K7) (OPT HL11V6-7 (V92215)) (OPT HL11V6-7 (V97928)) (OPT L803-6-7 (V06725)) (OPT B30NW6K7 (V97928)) (OPT HL11VAZ6-7 (V73197)) (OPT HL11VAZ6-7 (V92215)) (OPT HL11VAZ6-7 (V97928)) (OPT L803-6K7 (V06725)) (OPT HL11V6-7 (V80539)) (OPT HL11VAZ6-7 (V08524))		2
R 391	HL79-6		..COLLAR- (V56878) (SPEC BACC30M6) (OPT HL79-6 (V73197)) (OPT HL79-6 (V92215)) (OPT 66014-6 (V56878))		2

# 52-21-11

ILLUSTRATED PARTS LIST

01.1

Page 1076

Oct 10/86


**BOEING**  
 COMPONENT  
 MAINTENANCE MANUAL

FIG. & ITEM	PART NO.	AIRLINE PART NUMBER	NOMENCLATURE 1234567	EFF CODE	QTY PER ASSY
R 03-					
R 394	MS27253F1		..PLATE		1
R 397	BACM10A11-48J		..MARKER-FWD LH AFT RH		1
R 400	145T6014-4		.SUPPORT- (USED ON ITEMS 1, 1C, 1D, 1G, 1J, 1M, 1P)		1
R 405	145T6014-5		.SUPPORT ASSY-MECH (USED ON ITEMS 1A, 1B, 1E, 1F, 1H, 1L, 1N)		1
R 410	BACB28X3M013		..BUSHING		4
R 415	145T6014-6		..SUPPORT		1
R 420	BACS4OR08B80F		.SHIM- (USED ON ITEMS 1A, 1B, 1E, 1F, 1H, 1L, 1N)		1
R 425	BACS4OR08F11F		.SHIM		2
R 430	BACB30LR4-12		.BOLT- (OPT ITEM 430A)	C,D,F ,H,N, P	4
-430A	BACB30NN4K12		.BOLT- (V06710) (SPEC BACB30NN4K12) (OPT BACB30NN4K12 (V06725)) (OPT BACB30NN4K12 (V06950)) (OPT BACB30NN4K12 (V08524)) (OPT BACB30NN4K12 (V27624)) (OPT BACB30NN4K12 (V56878)) (OPT BACB30NN4K12 (V73197)) (OPT BACB30NN4K12 (V80539)) (OPT BACB30NN4K12 (V92215)) (OPT BACB30NN4K12 (V93907)) (OPT BACB30NN4K12 (V97928)) (OPT ITEM 430)	C,D,F ,H,N, P	4

52-21-11

ILLUSTRATED PARTS LIST

01.1

Page 1077

Oct 10/86

FIG. & ITEM	PART NO.	AIRLINE PART NUMBER	NOMENCLATURE 1234567	EFF CODE	QTY PER ASSY
R 03-435	BACB30LR4-12		DELETED		
R 440	145T6089-1		.RETAINER-STEP (USED ON ITEMS 1D, 1E, 1F, 1G, 1N, 1P)	C,D,F ,H,N, P	1
R 445	145T6089-2		.SHIM- (USED ON ITEMS 1D, 1E, 1F, 1G, 1N, 1P)	C,D,F ,H,N, P	8
R 447	BACF3F010K026NN		.FILLER- (USED ON ITEMS 1D, 1E, 1F, 1G, 1N, 1P)	C,D,F ,H,N, P	2
R 450	BACR15BA3AD		.RIVET- (SIZE DETERMINE ON INST) (USED ON ITEMS 1D, 1E, 1F, 1G, 1N, 1P)	C,D,F ,H,N, P	8
R 455	F1968-4BAC		.NUTPLATE- (V15653) (SPEC BACN10JZ4A2) (OPT NS103224-048 (V80539)) (OPT RMF9219-4 (V72962)) (USED ON ITEMS 1D, 1E, 1F, 1G, 1N, 1P)	C,D,F ,H,N, P	4
R 460	BACB30MY5K		.BOLT- (SIZE DETERMINE ON INST)		10
R 465	HL70-5		.COLLAR- (V56878) (SPEC BACC30M5) (OPT HL70-5 (V73197)) (OPT HL70-5 (V92215)) (OPT 66014-5 (V56878))		10

52-21-11

ILLUSTRATED PARTS LIST

01.1

Page 1078

Oct 10/86


**BOEING**  
 COMPONENT  
 MAINTENANCE MANUAL

FIG. & ITEM	PART NO.	AIRLINE PART NUMBER	NOMENCLATURE 1234567	EFF CODE	QTY PER ASSY
03-470	145T6060-1		.MECHANISM INSTL- (OPT ITEM 470A) (USED ON ITEMS 1, 1D) (FOR DETAILS SEE FIG. 2)	A-D	1
-470A	145T6060-7		.MECHANISM INSTL- (OPT ITEM 470) (USED ON ITEMS 1, 1D) (FOR DETAILS SEE FIG. 2)	A-D	1
-475	145T6060-5		.MECHANISM INSTL- (USED ON ITEMS 1A, 1B, 1E, 1F) (FOR DETAILS SEE FIG. 2)	A-H	1
-480	145T6060-7		.MECHANISM INSTL- (OPT ITEM 480A) (USED ON ITEMS 1C, 1G) (FOR DETAILS SEE FIG. 2)	E-H	1
-480A	145T6060-11		.MECHANISM INSTL- (OPT ITEM 480) (USED ON ITEMS 1C, 1G) (FOR DETAILS SEE FIG. 2)	E-H	1
-485	145T6060-15		.MECHANISM INSTL- (USED ON ITEMS 1H, 1L, 1N) (FOR DETAILS SEE FIG. 2)	J-P	1
R -485A	145T6060-13		.MECHANISM INSTL- (USED ON ITEMS 1J, 1M, 1P) (FOR DETAILS SEE FIG. 2)	J-P	1
R 490	145T6003-1		.FITTING ASSY-STOP	A-J,L	4
R 495	145T6003-4		.FITTING ASSY-STOP	K,M-P	4
R 500	145T6019-1		..BUSHING		1
R 505	145T6003-3		..FITTING	A-J,L	1
R -510	145T6003-5		..FITTING	K,M-P	1

52-21-11

 ILLUSTRATED PARTS LIST  
 01.1 Page 1079  
 Oct 10/86



FIG. & ITEM	PART NO.	AIRLINE PART NUMBER	NOMENCLATURE 1234567	EFF CODE	QTY PER ASSY
R 03-515	145T6004-1		.FITTING ASSY-STOP (OPT ITEM 525) (USED WITH ITEM 520)	A-J,L	2
R 520	145T6016-27		DELETED		
R -525	145T6004-4		.FITTING ASSY-STOP (OPT ITEM 515 USED WITH ITEM 555)	A-J,L	2
R -530	145T6004-7		.FITTING ASSY-STOP (OPT ITEM 531 USED WITH ITEM 560)	K,M-P	2
R -531	145T6004-9		.FITTING ASSY-STOP (OPT ITEM 530) (USED WITH ITEM 560)	K,M-P	2
R 535	145T6019-1		..BUSHING		1
R 540	145T6004-3		..FITTING- (USED ON ITEM 515)	A-J,L	1
R -545	145T6004-6		..FITTING- (USED ON ITEM 525)	A-J,L	1
R -550	145T6004-8		..FITTING- (USED ON ITEM 530)	K,M-P	1
R -551	145T6004-10		..FITTING- (USED ON ITEM 531)	K,M-P	1
R 555	145T6016-27		.FILLER- (USED WITH ITEM 515)	A-J,L	4
R 560	145T6016-27		.FILLER- (USED WITH ITEM 531)	K,M-P	2

# 52-21-11

 ILLUSTRATED PARTS LIST  
 01.1 Page 1080  
 Oct 10/86